



TABLE OF CONTENTS FOR ACADEMIC AFFAIRS COMMITTEE

Committee Meeting: 5/14/2014

Board Meeting: 5/15/2014
Austin, Texas

R. Steven Hicks, Chairman
Ernest Aliseda
Alex M. Cranberg
Brenda Pejovich
Robert L. Stillwell

	Committee Meeting	Board Meeting	Page
Convene	<i>1:00 p.m.</i> <i>Chairman Hicks</i>		
1. U. T. System Board of Regents: Discussion and appropriate action regarding Consent Agenda items, if any, referred for Committee consideration	<i>1:00 p.m.</i> Action	Action	142
2. U. T. Austin: Request to approve the honorific naming of a new joint center for the School of Law and the McCombs School of Business for former U.S. Senator Kay Bailey Hutchison as the Kay Bailey Hutchison Center for Energy, Law, and Business	<i>1:01 p.m.</i> Action <i>Dr. Safady</i>	Action	143
3. U. T. Brownsville: Request to approve the honorific naming of the Biomedical Research Facility II for the late Dr. Luis V. Colom as the Luis V. Colom Biomedical Research Facility	<i>1:04 p.m.</i> Action <i>Dr. Safady</i>	Action	144
4. U. T. Dallas: Request to approve the honorific naming of a new outdoor plaza as the Texas Instruments Plaza and acceptance of a gift of outdoor art of bronze busts	<i>1:08 p.m.</i> Action <i>Dr. Safady</i>	Action	145
5. U. T. Permian Basin: Request to approve the honorific naming of the Visual Arts Studios for the late President Emeritus Charles A. Sorber as the Charles A. Sorber Visual Arts Studios	<i>1:12 p.m.</i> Action <i>Dr. Safady</i>	Action	147
6. U. T. Tyler: Request to approve the honorific naming of a new Alumni House for Ms. Dawn Franks	<i>1:16 p.m.</i> Action <i>Dr. Safady</i>	Action	148
7. U. T. El Paso: Approval of preliminary authority for a Ph.D. in Mechanical Engineering	<i>1:20 p.m.</i> Action <i>President Natalicio</i> <i>Dr. Reyes</i>	Action	149

		Committee Meeting	Board Meeting	Page
8.	U. T. El Paso: Approval of acceptance of gift of outdoor work of art of a steel sculpture	1:25 p.m. Action <i>President Natalicio Dr. Reyes</i>	Action	150
9.	U. T. Rio Grande Valley: Approval of inventory of undergraduate and graduate degree programs	1:30 p.m. Action <i>Dr. Reyes</i>	Action	152
10.	U. T. System: Request for up to \$5 million in Available University Fund funding to support critical communication and marketing needs to launch new University of Texas Rio Grande Valley	1:35 p.m. Action <i>Dr. Safady</i>	Action	156
11.	U. T. Rio Grande Valley: Adoption of a process for hiring tenured and tenure-track faculty members from U. T. Brownsville and U. T. Pan American to U. T. Rio Grande Valley	1:40 p.m. Action <i>Dr. Reyes</i>	Action	158
12.	U. T. System: Discussion of student evaluations of faculty at the academic institutions	1:45 p.m. Discussion <i>Dr. Wanda Mercer Dr. Reyes</i>	Not on Agenda	164
13.	U. T. System: Discussion of data from the annual performance evaluation of faculty at the academic institutions	1:55 p.m. Discussion <i>Dr. Reyes</i>	Not on Agenda	169
14.	U. T. San Antonio: Presentation on the Prefreshman Engineering Program	2:05 p.m. Report/Discussion <i>Dr. Raul A. Reyna U. T. San Antonio</i>	Not on Agenda	183
15.	U. T. Austin: Approval of Charter Renewal Application for the University of Texas-University Charter School	2:25 p.m. Action <i>President Powers Dr. Reyes</i>	Action	197
	Adjourn	2:30 p.m.		

1. **U. T. System Board of Regents: Discussion and appropriate action regarding Consent Agenda items, if any, referred for Committee consideration**

RECOMMENDATION

The proposed Consent Agenda is located at the back of the book.

2. **U. T. Austin: Request to approve the honorific naming of a new joint center for the School of Law and the McCombs School of Business for former U.S. Senator Kay Bailey Hutchison as the Kay Bailey Hutchison Center for Energy, Law, and Business**

RECOMMENDATION

The Chancellor concurs in the recommendation of the Executive Vice Chancellor for Academic Affairs, the Vice Chancellor for External Relations, and President Powers that the U. T. System Board of Regents approve the honorific naming of a new joint center for the School of Law and the McCombs School of Business at U. T. Austin as the Kay Bailey Hutchison Center for Energy, Law, and Business. This recommendation is to recognize former U.S. Senator Kay Bailey Hutchison, a distinguished alumna of U. T. Austin and acclaimed public servant and businesswoman.

BACKGROUND INFORMATION

Senator Kay Bailey Hutchison, a U. T. Austin alumna, spent more than two decades as a public servant. She was the fifth most senior U.S. Senator by the end of her tenure and the first female U.S. Senator from Texas. First elected in 1993, Senator Hutchison was reelected three times, eventually choosing not to run for re-election in 2012. She has been a staunch advocate for higher education and a strong supporter of U. T. Austin. She joined Bracewell & Giuliani in 2013, and represents clients in banking, energy, transportation, telecommunications, and public policy. Senator Hutchison received her Bachelor of Arts degree from U. T. Austin in 1962 and her Doctor of Jurisprudence from the U. T. Austin School of Law in 1967.

The School of Law and the McCombs School of Business will launch an interdisciplinary academic center focused on energy. The mission of the center will be to provide the finest educational opportunities in the U.S. to students who wish to pursue careers in energy. The center will also provide critical analyses of legal, business, management, and policy questions relevant to energy and the energy industry, both domestic and international, including an emphasis on Latin America.

The center will combine three existing centers in the two schools: the School of Law's Center for Global Energy, International Arbitrations, and Environmental Law; the Business School's Energy Management and Innovation Center; and the Kay Bailey Hutchison Center for Latin American Law, which was honorifically named for Senator Hutchison by the Board of Regents on July 10, 2013. The Center for Latin American Law was formally established in the School of Law in 2013, but is not yet active. The new Kay Bailey Hutchison Center for Energy, Law, and Business will harness the expertise and resources associated with these three centers to provide a world-class, innovative, and multi faceted educational experience to students, as well as incisive, unbiased, and relevant analyses to policy makers.

This naming proposal is consistent with the Regents' *Rules and Regulations*, Rule 80307, relating to the honorific naming of facilities to recognize a distinguished alumna of U. T. Austin who has been a staunch advocate for higher education and a strong supporter of U. T. Austin.

3. **U. T. Brownsville: Request to approve the honorific naming of the Biomedical Research Facility II for the late Dr. Luis V. Colom as the Luis V. Colom Biomedical Research Facility**

RECOMMENDATION

The Chancellor concurs in the recommendation of the Executive Vice Chancellor for Academic Affairs, the Vice Chancellor for External Relations, and President García that the U. T. System Board of Regents approve the honorific naming of the Biomedical Research Facility II at U. T. Brownsville as the Luis V. Colom Biomedical Research Facility in honor of Dr. Luis V. Colom, who died in March 2014. Dr. Colom played an instrumental role in growing and expanding the biological sciences at U. T. Brownsville.

BACKGROUND INFORMATION

Dr. Luis Colom joined U. T. Brownsville in 2001 and was appointed the first Vice President for Research in December 2009. During his tenure, he personally attracted more than \$13.4 million in research grants and helped make the compelling case for U. T. Brownsville's first biomedical research building funded at \$23.5 million by the Texas Legislature. Dr. Colom's skill in attracting research funding and growing more science majors led to his being selected as Chair of the Biology Department in 2004. During his chairmanship, the biology and biomedical faculty almost quadrupled from eight to 30 members. In addition, the number of principal investigators overseeing grants on campus grew from just a few to 59 today.

In 2009, Dr. Colom wrote a grant to seek additional funding from the National Institutes of Health to build even more labs to attract research faculty and entice students to study science. His proposal was successful, funding the Biomedical Research Facility II, dedicated in September 2013. The building is 4,299 square feet and includes six biomedical research labs, private investigator offices, and support space. The facility adjoins the 58,558 square-foot Biomedical Research and Health Professions Building, which was completed in 2012.

Dr. Colom received an M.D. and a Ph.D. in biology from Facultad de Ciencias, Universidad de la República Oriental del Uruguay. He continued his work for the new U. T. Rio Grande Valley campus until his passing in March 2014.

This naming proposal is consistent with the Regents' *Rules and Regulations*, Rule 80307, relating to the honorific naming of facilities to recognize an extraordinarily well-respected scholar and researcher at U. T. Brownsville.

4. **U. T. Dallas: Request to approve the honorific naming of a new outdoor plaza as the Texas Instruments Plaza and acceptance of a gift of outdoor art of bronze busts**

RECOMMENDATION

The Chancellor concurs in the recommendation of the Executive Vice Chancellor for Academic Affairs, the Vice Chancellor for External Relations, and President Daniel that the U. T. System Board of Regents approve the honorific naming of a new outdoor plaza for Texas Instruments as the Texas Instruments Plaza.

U. T. Dallas further requests approval to accept a gift of outdoor art of bronze busts of the founders of Texas Instruments: Eugene McDermott, John Erik Jonsson, and Cecil Howard Green. The bronze busts will be displayed in the new plaza. This recommendation is to recognize decades of continued support from Texas Instruments.

BACKGROUND INFORMATION

Texas Instruments has been instrumental in the history of U. T. Dallas. Originally established as the Graduate Research Center of the Southwest, U. T. Dallas began as a research extension of Texas Instruments. The first structure built at U. T. Dallas, known as the Founders Building, was dedicated on October 29, 1964. Over the years, Texas Instruments has given more than \$20 million in cumulative philanthropic support to U. T. Dallas. This figure does not include overhead-bearing research grants or the value of any donated equipment. In addition, the Texas Instruments Foundation has awarded more than \$7 million in charitable grants to U. T. Dallas.

The new outdoor plaza, which is currently being renovated and landscaped as part of the second phase of the Campus Enhancement Project, measures approximately 15,000 square feet and occupies the outdoor area immediately north of the Founders Building. The renovation and landscaping is expected to be completed in early 2015.

Texas Instruments recently discovered they were in possession of extra busts of the founders, Eugene McDermott, John Erik Jonsson, and Cecil Howard Green. They generously offered to donate these bronze busts to U. T. Dallas. These busts will be displayed in the outdoor plaza, along with a historical marker explaining the story of these three men, the creation of the Graduate Research Center of the Southwest, and how their visionary work resulted in the creation of U. T. Dallas. Arranging these busts and a historic marker in a space named the Texas Instruments Plaza would accomplish several needs for U. T. Dallas, the greatest being the ability to bring together, in a highly visible and public space, the three founders and the story of the invaluable role that both the founders and Texas Instruments has played in the success of U. T. Dallas.

Installation costs are yet unknown as U. T. Dallas will wait until the plaza is completed in Summer 2014. U. T. Dallas expects minimal maintenance costs for the artwork.

This naming proposal is consistent with the Regents' *Rules and Regulations*, Rule 80307, relating to the honorific naming of facilities to recognize the continuous support given by Texas Instruments.

The request is also in accordance with Regents' *Rules and Regulations*, Rule 60101, Section 4.1, regarding outdoor works of art.

5. **U. T. Permian Basin: Request to approve the honorific naming of the Visual Arts Studios for the late President Emeritus Charles A. Sorber as the Charles A. Sorber Visual Arts Studios**

RECOMMENDATION

The Chancellor concurs in the recommendation of the Executive Vice Chancellor for Academic Affairs, the Vice Chancellor for External Relations, and President Watts that the U. T. System Board of Regents approve the honorific naming of the Visual Arts Studios for President Emeritus Charles A. Sorber to recognize an individual who was instrumental in laying the foundation for U. T. Permian Basin.

BACKGROUND INFORMATION

Dr. Charles A. Sorber first joined the U. T. System in 1975. He served in a number of academic, research, and administrative positions at U. T. San Antonio and he was Associate Dean, College of Engineering at U. T. Austin from 1980 to 1986, when he was appointed Dean of Engineering at the University of Pittsburgh. He returned to the U. T. System in 1993 when he was appointed as President of U. T. Permian Basin, serving as the fourth president of the institution from 1993-2001. Dr. Sorber returned to the engineering faculty at U. T. Austin in 2001. He served as Interim President of U. T. Arlington from 2003 to 2004. In 2009, Dr. Sorber was asked to come out of retirement to serve as Interim President of U. T. Pan American.

When Dr. Sorber was elected as President of U. T. Permian Basin in 1993, he established a solid foundation, securing the first construction funds since 1975. These funds brought about the Library/Lecture Center and the Visual Arts Studios. In addition, he was instrumental in constructing the first modern housing (apartment-style campus living units) for students and in creating some of U. T. Permian Basin's first endowments. On February 6, 2014, the Board of Regents appointed him President Emeritus of U. T. Permian Basin.

He attended The Pennsylvania State University, where he received a B.S. in 1961 and a M.S. in 1966, both in Sanitary Engineering, and a Ph.D. in Civil Engineering from U. T. Austin in 1971. Dr. Sorber passed away in October 2013.

The Visual Arts Studios is a 21,290 square-foot building, which was completed in December 1999 with a replacement cost of \$4.15 million. The main portion of the building houses a printmaking studio, drawing and painting studios, an art history lecture room, full kitchen, faculty and staff offices, and the Nancy Fyfe Cardozier Gallery.

This naming proposal is consistent with the Regents' *Rules and Regulations*, Rule 80307, relating to the honorific naming of facilities to recognize an individual who served in many capacities within the U. T. System for over three decades.

6. **U. T. Tyler: Request to approve the honorific naming of a new Alumni House for Ms. Dawn Franks**

RECOMMENDATION

The Chancellor concurs in the recommendation of the Executive Vice Chancellor for Academic Affairs, the Vice Chancellor for External Relations, and President Mabry that the U. T. System Board of Regents approve the honorific naming of the new Alumni House at U. T. Tyler for Ms. Dawn Franks who has been deeply involved in the East Texas community for many years.

BACKGROUND INFORMATION

Ms. Dawn Franks is a native of Tyler, Texas, and has been deeply involved in the city's philanthropic community her entire career. Since 2009, she has served as the President of Fourth Partner, one of the most significantly charitable companies in East Texas. In addition, she also serves as Executive Director of the Ben and Maytee Fisch Foundation and provides grant-making services to the Louis and Peaches Owen Family Foundation. Ms. Franks earned a B.S. in Political Science in 1979 and an M.S. in Public Administration in 1989, both from U. T. Tyler.

U. T. Tyler proposes to construct a building to house the alumni association and provide a "home" on the campus for returning alumni. The 11,000 square-foot building is projected to cost just over \$3 million and will be totally dependent on philanthropic support. To date, U. T. Tyler has received an anonymous lead gift of \$1.5 million. The construction of the Alumni House will not be placed on the Capital Improvement Program, as the cost is under the \$4 million threshold and it is being funded solely through philanthropic support. Groundbreaking will take place in Summer 2014, with completion scheduled by Fall 2015.

The proposed Alumni House will be a combination of Alumni Association and development offices, featuring multipurpose meeting rooms for alumni events and a central meeting place for faculty, students, and volunteers. The building will be prominently located in the circle at the main campus entrance on Old Omen Road.

This naming proposal is consistent with the Regents' Rules and Regulations, Rule 80307, relating to the honorific naming of facilities to recognize a distinguished alumna of U. T. Tyler who has been a strong advocate for philanthropic support throughout East Texas.

7. U. T. El Paso: Approval of preliminary authority for a Ph.D. in Mechanical Engineering

RECOMMENDATION

The Chancellor concurs in the recommendation of the Executive Vice Chancellor for Academic Affairs and President Natalicio that the U. T. System Board of Regents approve

- a. preliminary authority for U. T. El Paso to include a Doctor of Philosophy in Mechanical Engineering; and
- b. notification of the proposal to the Texas Higher Education Coordinating Board.

BACKGROUND INFORMATION

U. T. El Paso requests approval to plan for a Doctor of Philosophy (Ph.D.) in Mechanical Engineering. The proposed Ph.D. program will provide a broad-based, integrative education for doctoral students to train future technology leaders who are able to function effectively in applied research and development environments, as well as in classic academic settings. A mechanical engineering degree is the broadest of all engineering degrees and qualifies graduates for employment in a diverse range of industries such as energy, aerospace, defense, chemical, automotive, machinery and manufacturing, and utilities. The proposed program would contribute to meeting an increased national demand for a mechanical engineering research and development workforce and create a necessary innovation ecosystem for the prosperity of the economically disadvantaged southwest border region.

U. T. El Paso currently generates a significant number of graduates from its Master of Science in Mechanical Engineering. The University's Mechanical Engineering Department has strong and rapidly growing externally-funded programs in energy, aerospace, and advanced manufacturing research and continues to aggressively develop its research capabilities in these areas. Support for doctoral students will come primarily from research funding. The Mechanical Engineering Department has 16 research-active tenured and tenure-track faculty and state-of-the-art facilities to support the proposed program.

Once preliminary authority has been approved, U. T. El Paso will submit the degree program for approval by the U. T. System Board of Regents and the Texas Higher Education Coordinating Board.

8. **U. T. El Paso: Approval of acceptance of gift of outdoor work of art of a steel sculpture**

RECOMMENDATION

The Chancellor concurs in the recommendation of the Executive Vice Chancellor for Academic Affairs, the Vice Chancellor for External Relations, and President Natalicio that the U. T. System Board of Regents approve the acceptance of a gift of outdoor work of art of a steel sculpture at U. T. El Paso.

BACKGROUND INFORMATION

U. T. El Paso will receive a gift of outdoor work of art donated by the people of Mexico via the Consulate General of Mexico in El Paso. The steel sculpture titled Esfera Cuántica Tlahtolli, by artist Sebastián, will commemorate the U. T. El Paso Centennial and the century of close ties to the people and institutions in Mexico. See the proposed art work on the following page.

Tlahtolli is a word that pictorially represents the act of speaking in early written documents from Aztec, Toltec, and Mayan cultures. Drawing on his interest in geometric figures, Sebastián envisions a piece made from deconstructed, then reconstructed, conical figures. The interplay between the mathematical expressions of cones and the edges of these shapes gives rise to elements and symbols emphasizing the fraternity between U. T. El Paso and Mexico. The sculpture's surface will resemble a volute, a swirl shape that calls forth a rolled-up scroll, which will symbolize the activities of communicating and transmitting knowledge, thoughts, and ideas that define quintessential university work. The sculpture will reflect U. T. El Paso's connections to the people of Mexico and the support of higher education in the Paso del Norte region.

The sculpture will be approximately 13 feet tall and approximately 13 feet wide. It will be located in the plaza of the Fox Fine Arts Center near the center of the campus. The installation cost of \$28,000 will be funded from Unexpended Plant Funds. Future expenses to maintain the sculpture will be minimal.

The installation of the sculpture is in keeping with the U. T. El Paso Campus Master Plan.

The request is in accordance with Regents' *Rules and Regulations*, Rule 60101, Section 4.1, regarding outdoor works of art.



9. **U. T. Rio Grande Valley: Approval of inventory of undergraduate and graduate degree programs**

RECOMMENDATION

The Chancellor concurs in the recommendation of the Executive Vice Chancellor for Academic Affairs that the U. T. System Board of Regents approve

- a. an inventory of undergraduate and graduate degree programs to be offered at U. T. Rio Grande Valley as set forth on the following pages; and
- b. submission of the inventory to the Texas Higher Education Coordinating Board for review and appropriate action.

BACKGROUND INFORMATION

When U. T. Rio Grande Valley opens in Fall 2015, students continuing from U. T. Brownsville and U. T. Pan American will also be enrolled and their chosen programs of study will need to be available to them. Approval of this inventory of degree programs represents the first official act of consolidation for U. T. Rio Grande Valley. Comparable programs at the same level at U. T. Brownsville and U. T. Pan American have already been consolidated into a single program. After consolidating a total of 168 programs at U. T. Brownsville and U. T. Pan American, U. T. Rio Grande Valley will offer 137 baccalaureate, master's, and doctoral degree programs.

U. T. Rio Grande Valley Degree Programs

Degree Title	CIP Code	Baccalaureate	Master's	Doctoral
NATURAL RESOURCES & CONSERVATION				
Environmental Sciences	03.0104.00	BS (120 SCH)		
AREA, ETHNIC, CULTURAL, & GENDER STUDIES				
Mexican American Studies	05.0203.00	BA (120 SCH)		
COMMUNICATION, JOURNALISM & RELATED PROGRAMS				
Communication	09.0100.00	BACOMM (120 SCH) ¹	MA (36 SCH)	
Communication Studies	09.0101.00	BA (120 SCH)		
Mass Communication	09.0102.00	BA (120 SCH)		
COMPUTER & INFORMATION SCIENCES & SUPPORT SERVICES				
Computer Science	11.0101.00	BS (120 SCH) ¹		
Information Technology	11.0401.00		MS (36 SCH)	
Computer Information Systems Technology	11.0401.00	BAT (120 SCH)		
Computer Science	11.0701.00	BSCS (127 SCH)	MS (36 SCH)	
EDUCATION				
Bilingual Education	13.0201.00		MED (39 SCH)	
Curriculum & Instruction	13.0301.00		MED (36 SCH)	EDD (66 SCH)
Educational Leadership	13.0401.00		MED (36 SCH)	EDD (69 SCH)
Educational Administration	13.0401.00		MED (36 SCH) ¹	
Educational Technology	13.0501.00		MED (36 SCH)	
Special Education	13.1001.00		MED (36 SCH)	
Educational Diagnostician	13.1001.01		MED (45 SCH)	
Counseling & Guidance	13.1101.00		MED (48 SCH)	
Elementary Education	13.1202.00		MED (36 SCH)	
Secondary Education	13.1205.00		MED (39 SCH)	
Early Childhood	13.1210.00		MED (36 SCH)	
Reading & Literacy	13.1315.00		MED (36 SCH)	
English as a Second Language	13.1401.00		MA (36 SCH)	
ENGINEERING				
Civil Engineering	14.0801.00	BS (127 SCH)		
Computer Engineering	14.0901.00	BSCE (127 SCH)		
Electrical Engineering	14.1001.00	BSEE (125 SCH)	MSE (30 SCH)	
Engineering Physics	14.1201.00	BS (132 SCH)		
Mechanical Engineering	14.1901.00	BSME (127 SCH)	MSE (30 SCH)	
Manufacturing Engineering	14.3601.00	BSMFGE (127 SCH)	MSE (30 SCH)	
ENGINEERING TECHNOLOGIES/TECHNICIANS				
Engineering Management	15.1501.00		MS (30 SCH)	
FOREIGN LANGUAGES, LITERATURES, & LINGUISTICS				
Spanish Translation & Interpreting	16.0103.00	BA (120 SCH)	MA (36 SCH)	
French Studies	16.0901.00	BA (120 SCH) ¹		
Spanish	16.0905.00	BA (120 SCH)	MA (36 SCH)	
FAMILY & CONSUMER SCIENCES/HUMAN SCIENCES				
Early Care and Early Childhood Studies	19.0708.00	BS (120 SCH)		
LEGAL PROFESSIONS & STUDIES				
Law & Justice Studies	22.0000.00	BA (120 SCH) ¹		
ENGLISH LANGUAGE & LITERATURE/LETTERS				
English	23.0101.00	BA (120 SCH)	MA (36 SCH)	
Creative Writing	23.1302.00		MFA (42 SCH)	

LIBERAL ARTS & SCIENCES, GENERAL STUDIES & HUMANITIES				
General Studies	24.0102.00	BGS (120 SCH) ¹		
BIOLOGICAL & BIOMEDICAL SCIENCES				
Biology	26.0101.00	BS (120 SCH)	MS (36 SCH)	
Biomedical Sciences	26.0102.00	BS (120 SCH)		
MATHEMATICS & STATISTICS				
Mathematics	27.0101.00	BS (120 SCH)	MS (36 SCH)	
MULTI/INTERDISCIPLINARY STUDIES				
Computational Science	30.3001.00	BS (120 SCH)		
Interdisciplinary Studies	30.9999.01	BIS (120 SCH) BAIS (120 SCH) ³	MAIS (36 SCH) MSIS (36 SCH)	
Multidisciplinary Studies	30.9999.01	BMS (120 SCH)		
Applied Arts & Sciences	30.9999.40	BAAS (120 SCH)		
PARKS, RECREATION, LEISURE & FITNESS STUDIES				
Health & Human Performance	31.0505.00	BS (120 SCH) ¹		
Exercise Science	31.0505.00	BS (120 SCH)	MS (36 SCH)	
Kinesiology	31.0505.00	BS (121 SCH)	MS (36 SCH)	
PHILOSOPHY & RELIGIOUS STUDIES				
Philosophy	38.0101.00	BA (120 SCH)		
PHYSICAL SCIENCES				
Physical Science	40.0101.00	BS (120 SCH)		
Chemistry	40.0501.00	BS (120 SCH)	MS (30 SCH)	
Physics	40.0801.00	BS (121 SCH)	MS (30 SCH)	
PSYCHOLOGY				
Psychology	42.0101.00	BA (120 SCH) BS (120 SCH)	MA (36 SCH) ¹	
Experimental Psychology	42.2704.00		MA (36 SCH)	
Clinical Psychology	42.2801.00		MA (48 SCH)	
School Psychology	42.2805.00		MA (69 SCH)	
SECURITY & PROTECTIVE SERVICES				
Criminal Justice	43.0103.00	BS (120 SCH) ¹		
Criminal Justice	43.0103.00	BSCJ (120 SCH)	MS (36 SCH)	
Criminology & Criminal Justice	43.0104.00	BSCJ (120 SCH)		
PUBLIC ADMINISTRATION & SOCIAL SERVICE PROFESSIONS				
Public Service	44.0401.00	BA (120 SCH) ¹		
Public Policy & Management	44.0501.00		MPPM (36 SCH)	
Public Administration	44.0401.00		MPA (36 SCH)	
Social Work	44.0701.00	BSW (120 SCH)	MSSW (63 SCH)	
SOCIAL SCIENCES				
Social Studies	45.0101.00	BA (120 SCH)		
Anthropology	45.0201.00	BA (120 SCH)		
Economics	45.0601.00	BA (120 SCH) BBA (120 SCH)		
Government	45.1001.00	BA (120 SCH) ¹		
Political Science	45.1001.00	BA (120 SCH)		
Sociology	45.1101.00	BA (120 SCH)	MS (36 SCH)	
VISUAL & PERFORMING ARTS				
Dance	50.0301.00	BA (120 SCH)		
Theatre	50.0501.00	BA (120 SCH)	MA (36 SCH) ²	
Art	50.0701.00	BA (120 SCH)		
Art	50.0702.00	BA (120 SCH) ¹		
Art	50.0702.00	BFA (120 SCH)	MFA (60 SCH)	
Music	50.0901.00	BA (120 SCH)	MM (36 SCH)	
Music	50.0901.00	BM (120 SCH) ¹		

Performance	50.0903.00	BA (120 SCH) ¹ BM (129 SCH)		
HEALTH PROFESSIONS & RELATED CLINICAL SCIENCES				
Health Services Technology	51.0000.00	BAT (126 SCH)		
Health Science	51.0000.00		MS (36 SCH)	
Health	51.0001.00	BS (121 SCH)		
Communication Sciences & Disorders	51.0201.00	BS (121 SCH)	MS (58 SCH)	
Physician Assistant Studies	51.0912.00		MPAS (100 SCH)	
Clinical Laboratory Sciences	51.1005.00	BS (123 SCH)		
Occupational Therapy	51.2306.00		MS (71 SCH)	
Rehabilitation Counseling	51.2310.00		MS (48 SCH)	PhD (66 SCH)
Rehabilitation Services	51.2314.00	BS (120 SCH)		
Rehabilitation Services -Deaf Studies	51.2314.00	BS (120 SCH)		
Dietetics	51.3101.00	BS (124 SCH)		
Nursing	51.3801.00	BSN (121 SCH)		
Nursing Administration	51.3802.00		MSN (36 SCH)	
Nursing Practitioner	51.3805.00		MSN (48 SCH)	
Nursing Education	51.3817.00		MSN (37 SCH)	
BUSINESS, MANAGEMENT, MARKETING, & RELATED SUPPORT SERVICES				
Business Administration	52.0101.00			PhD (66 SCH)
Management	52.0201.00	BBA (120 SCH)		
Business Administration	52.0201.00		MBA (36 SCH)	
Materials Management & Logistics	52.0203.00	BS (120 SCH)		
Accounting	52.0301.00	BBA (120 SCH)	MACC (36 SCH) MSA (30 SCH)	
Entrepreneurship	52.0701.00	BBA (120 SCH) ¹		
Finance	52.0801.00	BBA (120 SCH)		
International Business	52.1101.00	BBA (120 SCH)		
Management Information Systems	52.1201.00	BBA (120 SCH) ¹		
Computer Information Systems	52.1201.00	BBA (120 SCH) ¹		
Information Systems	52.1201.00	BBA (120 SCH)		
Marketing	52.1401.00	BBA (120 SCH)		
HISTORY				
History	54.0101.00	BA (120 SCH)	MA (36 SCH)	

¹ Phase out program by 8/31/2019

² Phase out program by 8/31/2017

³ Either the BIS or the BAIS will be phased out once the education faculty group finalizes its curricular consolidation for baccalaureate-level teacher preparation.

10. **U. T. System: Request for up to \$5 million in Available University Fund funding to support critical communication and marketing needs to launch new University of Texas Rio Grande Valley**

RECOMMENDATION

The Chancellor concurs in the recommendation of the Executive Vice Chancellor for Academic Affairs, the Executive Vice Chancellor for Health Affairs, and the Vice Chancellor for External Relations that the U. T. System Board of Regents allocate up to \$5 million in Available University Fund (AUF) funding to support critical communication and marketing needs to launch the new University of Texas Rio Grande Valley (UTRGV). Specifically, funding will provide resources for recruiting and enrolling students for the inaugural 2015 class of UTRGV; building a comprehensive university and medical school Web presence; creating time-sensitive and content-rich materials for print, television, radio and digital dissemination; and engaging in brand development for UTRGV to fulfill its role as a bicultural, binational, and bilingual institution of the 21st century.

BACKGROUND INFORMATION

With a new UTRGV university and medical school launching in 2015 and 2016 respectively, neither U. T. Brownsville nor U. T. Pan American has the resources necessary to fund the myriad of communications needs essential to provide students, teachers, parents, faculty, staff, benefactors, and others with essential information, nor does either institution presently have the personnel to lead an institutional identity and branding initiative in the short time leading to the opening of UTRGV.

This funding request will allow the U. T. System to lead and work collaboratively with U. T. Brownsville and U. T. Pan American professionals to perform a variety of critical functions, including but not limited to:

- The design and development of customized admissions materials for high schools, community colleges, social agencies, students, parents, and more;
- The creation of student marketing materials, tailored to various stages of enrollment (including transfer students) for different audience segments;
- The development of mailings and information dissemination regarding admissions, financial aid, college programs, student engagement, and more;
- The creation of a robust, comprehensive UTRGV website with homepage, and all administrative and departmental pages;
- The implementation of an integrated Constituent Relationship Management (CRM) system to manage and track prospective student data, generate reports, and gauge progress toward enrollment and matriculation goals;

- The undertaking of an inclusive branding initiative, including a Request for Proposal process to hire an experienced agency to work with the U. T. System and the South Texas constituency of students, faculty, staff, and volunteers to create institutional identity, color, logo, mascot, and other institutional and athletics descriptors; and
- Promotional materials and activities to engage the civic, philanthropic, and business communities around the new university.

11. **U. T. Rio Grande Valley: Adoption of a process for hiring tenured and tenure-track faculty members from U. T. Brownsville and U. T. Pan American to U. T. Rio Grande Valley**

RECOMMENDATION

The Chancellor concurs in the recommendation of the Executive Vice Chancellor for Academic Affairs and the Interim Vice Chancellor and General Counsel that the U. T. System Board of Regents approve a process for hiring tenured and tenure-track faculty members from U. T. Brownsville and U. T. Pan American to U. T. Rio Grande Valley as set forth on the following pages.

BACKGROUND INFORMATION

The proposed process for hiring tenured and tenure-track faculty members from U. T. Brownsville and U. T. Pan American to U. T. Rio Grande Valley has been developed in accordance with the Board's obligation to govern, operate, support, and maintain U. T. Rio Grande Valley as a university of the first class. Senate Bill 24, codified in part in Chapter 79 of the *Texas Education Code* from the 2013 Texas Legislature, Regular Session, authorized the creation of U. T. Rio Grande Valley and also requires that the Board facilitate the employment of as many U. T. Brownsville and U. T. Pan American faculty "as is prudent and practical."

The U. T. System Offices of Academic Affairs and General Counsel worked to develop a mechanism by which current U. T. Brownsville and U. T. Pan American faculty members may become employed at U. T. Rio Grande Valley. Upon adoption, the procedure set forth on the following pages will become an official policy of the Board, which will expire at the end of the 2015-16 academic year.

Hiring of Tenured and Tenure-Track Faculty Members to The University of Texas Rio Grande Valley

1. Purpose. The University of Texas Rio Grande Valley (UTRGV) shall implement this procedure consistent with The University of Texas System Board of Regents' legal obligation to govern, operate, support, and maintain UTRGV as a university of the first class and to facilitate the employment of as many faculty of The University of Texas at Brownsville (UTB) and The University of Texas-Pan American (UTPA) as is prudent and practical in accordance with Texas Senate Bill 24, codified in part in Chapter 79 of the *Texas Education Code*.
2. Other Contrary Rules and Policies Suspended. Unique considerations are inherent in the creation of UTRGV and abolition of UTB and UTPA. Accordingly, notwithstanding any contrary provision in the Regents' *Rules and Regulations*, UTPA's *Handbook of Operating Procedures* or UTB's *Handbook of Operating Policies*, or a U. T. System or other institutional policy, UTRGV shall use this procedure to facilitate the initial employment of UTB and UTPA faculty at UTRGV.
3. UTB and UTPA Appointments Terminated. On the earlier of the following dates, faculty appointments and tenure at UTB and UTPA will terminate if they have not already terminated by their own terms:
 - 3.1 the dates on which UTB and UTPA, respectively, are abolished by the Board of Regents; or
 - 3.2 another date designated by the Board of Regents by vote in open meeting.
4. Recommendation of Tenure at UTRGV for Full-Time Faculty Members Tenured at UTB or UTPA.
 - 4.1 The President of UTRGV shall recommend that the Board of Regents grant tenure to an individual if:
 - a. The individual holds a terminal degree and:
 1. holds a full-time, tenured faculty appointment as a Professor, Associate Professor, or Assistant Professor at UTB or UTPA on the date of the President's recommendation; or

2. receives UTB's or UTPA's recommendation for a tenured faculty appointment during the 2014-2015 academic year.
- b. The individual timely completes and submits all forms required by UTRGV to express the individual's interest in and qualifications for a tenured faculty appointment at UTRGV;
 - c. In the past seven years, UTB or UTPA has not issued the individual a disciplinary action that could have been grieved under that institution's faculty grievance policy or reviewed under other approved procedures of the Board of Regents, the appropriate institution or the U. T. System, and the disciplinary action is now final;
 - d. The individual is not currently the target of allegations under investigation by UTB, UTPA, or the U. T. System for which there is substantial evidence that would constitute good cause for termination from his or her tenured faculty appointment;
 - e. The individual has not received an overall "unsatisfactory" or "does not meet expectations" rating on:
 1. Either of the individual's two most recent annual reviews; or
 2. The individual's most recent comprehensive periodic evaluation conducted under Rule 31102 of the Regents' *Rules and Regulations*.
 - f. The individual is assigned to an academic unit at UTB or UTPA that corresponds with a UTRGV academic unit that will exist at the inception of UTRGV's first academic year;
 - g. UTRGV has budgeted a sufficient number of faculty positions in that academic unit to grant tenured appointments to all individuals in the corresponding UTB and UTPA academic unit(s) who qualify under this Section 4.1; and
 - h. The individual has either completed the criminal background check required of new UTRGV employees by The University of Texas System Administration Policy UTS124, Section 2.2,8 or had a criminal background check conducted by UTB

or UTPA since March 26, 2012, that is appropriate for the position sought.

- 4.2 Decision and Reconsideration. If a full-time, tenured faculty member at UTB or UTPA timely completes and submits all forms under Section 4.1.b above, UTRGV shall notify that faculty member whether he or she will be recommended for tenure at UTRGV. Any such faculty member who is not recommended for tenure may submit additional material for use by UTRGV. This material will be carefully reviewed by UTRGV in reconsidering this initial decision. No later than 45 days after UTRGV receives this additional material, UTRGV should notify the faculty member of its final decision.
- 4.3 Title Upon Award of Tenure. A UTB or UTPA Professor awarded tenure after a recommendation made under Section 4.1 above shall hold tenure at UTRGV in the initial rank of Professor. A UTB or UTPA Associate Professor or Assistant Professor awarded tenure after a recommendation made under Section 4.1 above shall hold tenure at UTRGV in the initial rank of Associate Professor.
5. Comprehensive Periodic Evaluation. The number of years since a tenured faculty member last received a comprehensive periodic evaluation at UTB or UTPA shall determine the timing of that faculty member's next evaluation under Rule 31102 of the Regents' *Rules and Regulations*.
6. Tenure-Track Appointment. The award of a full-time, tenure-track faculty appointment at UTRGV is governed by this Section.
 - 6.1 The President of UTRGV shall grant a full-time, tenure-track faculty appointment to an individual if:
 - a. The individual holds a terminal degree and a full-time, tenure-track faculty appointment as an Associate Professor or Assistant Professor at UTB or UTPA on the date of the President's grant;
 - b. The individual timely completes and submits all forms required by UTRGV to express the individual's interest in and qualifications for a tenure-track faculty appointment at UTRGV;
 - c. In the past seven years, UTB or UTPA has not issued the individual a disciplinary action that could have been grieved under that institution's faculty grievance policy or reviewed under other approved procedures of the Board of Regents,

the appropriate institution or the U. T. System, and the disciplinary action is now final;

- d. The individual is not currently the target of allegations under investigation by UTB, UTPA, or the U. T. System for which there is substantial evidence that would constitute good cause for termination from his or her tenure-track faculty appointment;
 - e. UTB or UTPA has not issued the individual, in accordance with Rule 31002, Section 1 of the Regents' *Rules and Regulations*, a notice of nonrenewal, or does not issue a notice of nonrenewal to the individual during the 2014-2015 academic year;
 - f. The individual has not received an overall "unsatisfactory" or "does not meet expectations" rating on either of the individual's two most recent annual reviews;
 - g. The individual is assigned to an academic unit at UTB or UTPA that corresponds with an UTRGV academic unit that will exist at the inception of UTRGV's first academic year;
 - h. UTRGV has budgeted a sufficient number of faculty positions in that academic unit to grant tenure-track appointments to all individuals in the corresponding UTB and UTPA academic unit(s) who qualify under this Section 6.1; and
 - i. The individual has either completed the criminal background check required of new UTRGV employees by The University of Texas System Administration Policy UTS124, Section 2.2, or had a criminal background check conducted by UTB or UTPA since March 26, 2012, that is appropriate for the position sought.
- 6.2 Decision and Reconsideration. If a full-time, tenure-track faculty member at UTB or UTPA timely completes and submits all forms under Section 6.1.b above, UTRGV shall notify that faculty member whether he or she will receive a tenure-track appointment at UTRGV. Any such faculty member who does not receive a tenure-track appointment may submit additional material for UTRGV. This material will be carefully reviewed by UTRGV in reconsidering this initial decision. No later than 45 days after UTRGV receives this additional material, UTRGV should notify the faculty member of its final decision.

- 6.3 Title Upon Award of Tenure-Track Faculty Appointment. An individual appointed to a tenure-track faculty appointment at UTRGV shall hold the title of Assistant Professor.
- 6.4 Credit Toward Probationary Period. Prior full-time service at UTB or UTPA in an academic rank listed in Regents' Rule 31007, Section 3 shall count toward fulfillment of the maximum period of probationary service described in Rule 31007, Section 5.
7. Board Approval. The award of tenure is subject to the approval of the Board of Regents.
8. Joint Appointments Permitted. A person appointed to a tenured or tenure-track faculty position at UTRGV under these procedures may concurrently hold his or her faculty appointment at UTB or UTPA until that respective institution is abolished.
9. Expiration. These procedures shall expire at the end of the 2014-2015 academic year.

12. **U. T. System: Discussion of student evaluations of faculty at the academic institutions**

DISCUSSION

Dr. Wanda Mercer, Associate Vice Chancellor for Student Affairs, will discuss the participation rates from the Fall 2013 implementation of new student evaluation requirements and the ongoing efforts toward improving student responsiveness. See the Student Teaching Evaluations on the following pages.

The Task Force on Student Evaluation of Faculty Teaching developed a report in 2013, and the initial implementation of the new student evaluation requirements began at the academic institutions in the Fall Semester 2013. This evaluation program requires the implementation of five questions common across all institutions, specific placement of these questions and rating scales, recommended processes and incentives for student participation, and reporting requirements.

Academic Institutions: Student Teaching Evaluation

The University of Texas System
Office of Strategic Initiatives
March 3, 2014



Academic Institutions:
Student Response Rates

Fall 2013 : Lecture courses

Institution	College	Overall Student Response Rate
UT Arlington	Architecture	47%
	Business	47%
	Education and Health Professions	37%
	Engineering	40%
	Liberal Arts	40%
	Nursing	38%
	Science	36%
	Social Work	47%
	University Studies	24%
	Urban and Public Affairs	41%
	Overall	41%
UT Austin	Architecture	41%
	Business	49%
	Communication	36%
	Education	41%
	Engineering	32%
	Fine Arts	42%
	Geosciences	36%
	Information	45%
	Law	75%
	LBJ/Public Affairs	66%
	Liberal Arts	31%
	Natural Sciences	30%
	Nursing	60%
	Pharmacy	17%
	Social Work	56%
Undergraduate Studies	43%	
	Overall	33%
UT Brownsville	College of Biomed Sci & Hlth Policy	41%
	College of Liberal Arts	49%
	College of Education	61%
	College of Nursing	65%
	Continuing Education Division	50%
	College of Science Math & Tech	52%
	School of Business	54%
	Overall	52%
UT Dallas	Arts & Humanities	51%
	Behavioral & Brain Sciences	57%
	Economic, Political & Policy Sciences	54%
	Interdisciplinary Studies	58%
	Jindal School of Management	59%
	Jonsson School of Engineering & Computer Sciences	58%
	Natural Sciences & Mathematics	48%
		Overall

Academic Institutions:
Student Response Rates**Fall 2013 : Lecture courses**

Institution	College	Overall Student Response Rate
UT El Paso	College of Business Admin.	42%
	College of Education	53%
	College of Engineering	48%
	College of Health Sciences	52%
	College of Liberal Arts	48%
	College of Science	43%
	School of Nursing	26%
	Other Programs	50%
	Overall	46%
UT Pan American	College of Arts & Humanities	75%
	College of Business Administration	76%
	College of Education	83%
	College of Engineering & Computer Science	75%
	College of Health Sciences & Human Services	85%
	College of Social & Behavioral Sciences	75%
	College of Science & Mathematics	78%
	University College	82%
	Overall	77%
UT Permian Basin	College of Arts and Sciences	66%
	College of Business and Engineering	58%
	College of Education	77%
	Nursing	65%
	University Success	67%
	Overall	64%
UT San Antonio	Architecture	54%
	Business	51%
	Education & Human Development	62%
	Engineering	63%
	Liberal & Fine Arts	53%
	Public Policy	63%
	Sciences	55%
	University College	49%
Overall	55%	

Academic Institutions:
Student Response Rates

Fall 2013 : Lecture courses

Institution	College	Overall Student Response Rate
UT Tyler	Arts & Sciences	63%
	Business & Technology	65%
	Engr & Comp Sci	58%
	Education & Psychology	73%
	Nursing & Health Sci	76%
	Overall	67%

UT Austin Notes:

- 1) Results are from electronic course instructor surveys for Fall 2013.
- 2) Results are for instruction type lecture, as determined by the Registrar's Office.
- 3) Intercollegial Programs, Non-residential Programs, ROTC are excluded from the above counts.
- 4) Percentage participation is calculated for each college by dividing Responses by Enrollment, and multiplying by 100 ($\% = R/E * 100$).
- 5) Percentage participation for the University as a whole is calculated by the same method.

UT Dallas Notes:

Did not include College 999 or UG
Includes LEC, LLC, LLN ssr_components

13. **U. T. System: Discussion of data from the annual performance evaluation of faculty at the academic institutions**

DISCUSSION

Executive Vice Chancellor Reyes will initiate a discussion on data from the annual performance evaluation of faculty at the academic institutions (Pages 170-182), including a discussion of the use of four versus five categories of performance.

Academic Institutions: Faculty Annual Evaluations

The University of Texas System
Office of Strategic Initiatives
March 3, 2014



Meeting of the U. T. System Board of Regents - Academic Affairs Committee

UT Arlington
Faculty Annual Evaluations

Annual Review of Tenured Faculty

AY 2012-2013 (relative frequency [%] by academic unit)	Exceeds expectations	Meets expectations	Does not meet expectations	Unsatisfactory	N
	3	2	1	0	
School of Architecture					9
Professor	22.2%	22.2%	0.0%	0.0%	
Associate professor	22.2%	33.3%	0.0%	0.0%	
Assistant Professor	n/a	n/a	n/a	n/a	
Other rank	n/a	n/a	n/a	n/a	
College of Business					47
Professor	6.4%	42.6%	0.0%	0.0%	
Associate professor	4.3%	46.8%	0.0%	0.0%	
Assistant Professor	n/a	n/a	n/a	n/a	
Other rank	n/a	n/a	n/a	n/a	
College of Education and Health Professions					13
Professor	23.1%	30.8%	0.0%	0.0%	
Associate professor	0.0%	46.2%	0.0%	0.0%	
Assistant Professor	n/a	n/a	n/a	n/a	
Other rank	n/a	n/a	n/a	n/a	
College of Engineering					89
Professor	40.4%	14.6%	0.0%	0.0%	
Associate professor	23.6%	20.2%	1.1%	0.0%	
Assistant Professor	n/a	n/a	n/a	n/a	
Other rank	n/a	n/a	n/a	n/a	
College of Liberal Arts					71
Professor	18.3%	15.5%	0.0%	0.0%	
Associate professor	38.0%	28.2%	0.0%	0.0%	
Assistant Professor	n/a	n/a	n/a	n/a	
Other rank	n/a	n/a	n/a	n/a	
College of Nursing					11
Professor	27.3%	9.1%	0.0%	0.0%	
Associate professor	63.6%	0.0%	0.0%	0.0%	
Assistant Professor	n/a	n/a	n/a	n/a	
Other rank	n/a	n/a	n/a	n/a	
College of Science					68
Professor	32.4%	30.9%	0.0%	0.0%	
Associate professor	17.6%	19.1%	0.0%	0.0%	
Assistant Professor	n/a	n/a	n/a	n/a	
Other rank	n/a	n/a	n/a	n/a	
School of Social Work					13
Professor	30.8%	30.8%	0.0%	0.0%	
Associate professor	7.7%	30.8%	0.0%	0.0%	
Assistant Professor	n/a	n/a	n/a	n/a	
Other rank	n/a	n/a	n/a	n/a	
School of Urban and Public Affairs					10
Professor	0.0%	30.0%	0.0%	0.0%	
Associate professor	10.0%	50.0%	10.0%	0.0%	
Assistant Professor	n/a	n/a	n/a	n/a	
Other rank	n/a	n/a	n/a	n/a	
University College					0
Professor	n/a	n/a	n/a	n/a	
Associate professor	n/a	n/a	n/a	n/a	
Assistant Professor	n/a	n/a	n/a	n/a	
Other rank	n/a	n/a	n/a	n/a	
Institution					331
Professor	26.0%	23.9%	0.0%	0.0%	
Associate professor	22.1%	27.5%	0.6%	0.0%	
Assistant Professor	n/a	n/a	n/a	n/a	
Other rank	n/a	n/a	n/a	n/a	
Institutional Grand Totals: Annual Review of Tenured Faculty (all ranks)	48.0%	51.4%	0.6%	0.0%	

Meeting of the U. T. System Board of Regents - Academic Affairs Committee

UT Arlington
Faculty Annual Evaluations

Comprehensive Periodic Review of Tenured Faculty

AY 2012-2013	Exceeds expectations	Meets expectations	Does not meet expectations	Unsatisfactory	N
	3	2	1	0	
School of Architecture					1
Professor	0.0%	0.0%	100.0%	0.0%	
Associate professor	0.0%	0.0%	0.0%	0.0%	
Assistant Professor	n/a	n/a	n/a	n/a	
Other rank	n/a	n/a	n/a	n/a	
College of Business					2
Professor	0.0%	50.0%	0.0%	0.0%	
Associate professor	0.0%	50.0%	0.0%	0.0%	
Assistant Professor	n/a	n/a	n/a	n/a	
Other rank	n/a	n/a	n/a	n/a	
College of Education and Health Professions					4
Professor	0.0%	25.0%	0.0%	0.0%	
Associate professor	25.0%	50.0%	0.0%	0.0%	
Assistant Professor	n/a	n/a	n/a	n/a	
Other rank	n/a	n/a	n/a	n/a	
College of Engineering					13
Professor	53.8%	23.1%	0.0%	0.0%	
Associate professor	0.0%	15.4%	7.7%	0.0%	
Assistant Professor	n/a	n/a	n/a	n/a	
Other rank	n/a	n/a	n/a	n/a	
College of Liberal Arts					15
Professor	33.3%	6.7%	0.0%	0.0%	
Associate professor	60.0%	0.0%	0.0%	0.0%	
Assistant Professor	n/a	n/a	n/a	n/a	
Other rank	n/a	n/a	n/a	n/a	
College of Nursing					0
Professor	0.0%	0.0%	0.0%	0.0%	
Associate professor	0.0%	0.0%	0.0%	0.0%	
Assistant Professor	n/a	n/a	n/a	n/a	
Other rank	n/a	n/a	n/a	n/a	
College of Science					13
Professor	61.5%	38.5%	0.0%	0.0%	
Associate professor	0.0%	0.0%	0.0%	0.0%	
Assistant Professor	n/a	n/a	n/a	n/a	
Other rank	n/a	n/a	n/a	n/a	
School of Social Work					2
Professor	50.0%	0.0%	0.0%	0.0%	
Associate professor	50.0%	0.0%	0.0%	0.0%	
Assistant Professor	n/a	n/a	n/a	n/a	
Other rank	n/a	n/a	n/a	n/a	
School of Urban and Public Affairs					0
Professor	0.0%	0.0%	0.0%	0.0%	
Associate professor	0.0%	0.0%	0.0%	0.0%	
Assistant Professor	n/a	n/a	n/a	n/a	
Other rank	n/a	n/a	n/a	n/a	
University College					0
Professor	n/a	n/a	n/a	n/a	
Associate professor	n/a	n/a	n/a	n/a	
Assistant Professor	n/a	n/a	n/a	n/a	
Other rank	n/a	n/a	n/a	n/a	
Institution					50
Professor	42.0%	22.0%	2.0%	0.0%	
Associate professor	22.0%	10.0%	2.0%	0.0%	
Assistant Professor	n/a	n/a	n/a	n/a	
Other rank	n/a	n/a	n/a	n/a	

Institutional Grand Totals: Comprehensive Periodic Review of Tenured Faculty (all ranks)

64.0%

32.0%

4.0%

0.0%

Meeting of the U. T. System Board of Regents - Academic Affairs Committee

UT Arlington
Faculty Annual Evaluations

Annual Review + Comprehensive Periodic Evaluation (i.e., All Tenured Faculty)

AY 2012-2013	Exceeds expectations	Meets expectations	Does not meet expectations	Unsatisfactory	N
	3	2	1	0	
School of Architecture					10
Professor	20.0%	20.0%	10.0%	0.0%	
Associate professor	20.0%	30.0%	0.0%	0.0%	
Assistant Professor	n/a	n/a	n/a	n/a	
Other rank	n/a	n/a	n/a	n/a	
College of Business					49
Professor	6.1%	42.9%	0.0%	0.0%	
Associate professor	4.1%	46.9%	0.0%	0.0%	
Assistant Professor	n/a	n/a	n/a	n/a	
Other rank	n/a	n/a	n/a	n/a	
College of Education and Health Professions					17
Professor	17.6%	29.4%	0.0%	0.0%	
Associate professor	5.9%	47.1%	0.0%	0.0%	
Assistant Professor	n/a	n/a	n/a	n/a	
Other rank	n/a	n/a	n/a	n/a	
College of Engineering					102
Professor	42.2%	15.7%	0.0%	0.0%	
Associate professor	20.6%	19.6%	2.0%	0.0%	
Assistant Professor	n/a	n/a	n/a	n/a	
Other rank	n/a	n/a	n/a	n/a	
College of Liberal Arts					86
Professor	20.9%	14.0%	0.0%	0.0%	
Associate professor	41.9%	23.3%	0.0%	0.0%	
Assistant Professor	n/a	n/a	n/a	n/a	
Other rank	n/a	n/a	n/a	n/a	
College of Nursing					11
Professor	27.3%	9.1%	0.0%	0.0%	
Associate professor	63.6%	0.0%	0.0%	0.0%	
Assistant Professor	n/a	n/a	n/a	n/a	
Other rank	n/a	n/a	n/a	n/a	
College of Science					81
Professor	37.0%	32.1%	0.0%	0.0%	
Associate professor	14.8%	16.0%	0.0%	0.0%	
Assistant Professor	n/a	n/a	n/a	n/a	
Other rank	n/a	n/a	n/a	n/a	
School of Social Work					15
Professor	33.3%	26.7%	0.0%	0.0%	
Associate professor	13.3%	26.7%	0.0%	0.0%	
Assistant Professor	n/a	n/a	n/a	n/a	
Other rank	n/a	n/a	n/a	n/a	
School of Urban and Public Affairs					10
Professor	0.0%	30.0%	0.0%	0.0%	
Associate professor	10.0%	50.0%	10.0%	0.0%	
Assistant Professor	n/a	n/a	n/a	n/a	
Other rank	n/a	n/a	n/a	n/a	
University College					0
Professor	n/a	n/a	n/a	n/a	
Associate professor	n/a	n/a	n/a	n/a	
Assistant Professor	n/a	n/a	n/a	n/a	
Other rank	n/a	n/a	n/a	n/a	
Institution					381
Professor	28.1%	23.6%	0.3%	0.0%	
Associate professor	22.0%	25.2%	0.8%	0.0%	
Assistant Professor	n/a	n/a	n/a	n/a	
Other rank	n/a	n/a	n/a	n/a	
Institutional Grand Totals: AR plus CPE (combined) of Tenured Faculty (all ranks)	50.1%	48.8%	1.0%	0.0%	

Meeting of the U. T. System Board of Regents - Academic Affairs Committee

UT Austin

Faculty Annual Evaluations

The University of Texas at Austin AY 2012-2013	Exceeds expectations	Meets expectations	Does not meet expectations	Unsatisfactory
	4	3	2	1
Architecture, School of				
Professor	18.75%	81.25%	0.00%	0.00%
Associate professor	6.25%	93.75%	0.00%	0.00%
Assistant Professor	100.00%	0.00%	0.00%	0.00%
Other rank	30.77%	69.23%	0.00%	0.00%
Business, McCombs School of				
Professor	56.45%	41.94%	1.61%	0.00%
Associate professor	57.14%	42.86%	0.00%	0.00%
Assistant Professor	33.33%	63.34%	3.33%	0.00%
Other rank	52.39%	44.44%	3.17%	0.00%
Communication, Moody College of				
Professor	48.57%	48.57%	2.86%	0.00%
Associate professor	40.00%	50.00%	6.67%	3.33%
Assistant Professor	45.83%	54.17%	0.00%	0.00%
Other rank	52.63%	47.37%	0.00%	0.00%
Education, College of				
Professor	42.11%	55.26%	2.63%	0.00%
Associate professor	21.88%	68.75%	9.37%	0.00%
Assistant Professor	45.71%	54.29%	0.00%	0.00%
Other rank	14.81%	85.19%	0.00%	0.00%
Engineering, Cockrell School of				
Professor	53.06%	39.46%	7.48%	0.00%
Associate professor	57.69%	34.62%	7.69%	0.00%
Assistant Professor	55.94%	42.37%	1.69%	0.00%
Other rank	55.56%	44.44%	0.00%	0.00%
Fine Arts, College of				
Professor	62.69%	35.82%	1.49%	0.00%
Associate professor	41.67%	56.25%	2.08%	0.00%
Assistant Professor	50.00%	50.00%	0.00%	0.00%
Other rank	27.50%	72.50%	0.00%	0.00%
Geosciences, Jackson School of				
Professor	82.14%	14.29%	3.57%	0.00%
Associate professor	71.43%	28.57%	0.00%	0.00%
Assistant Professor	80.00%	10.00%	10.00%	0.00%
Other rank	100.00%	0.00%	0.00%	0.00%
Information, School of				
Professor	0.00%	66.67%	33.33%	0.00%
Associate professor	0.00%	75.00%	25.00%	0.00%
Assistant Professor	57.14%	28.57%	14.29%	0.00%
Other rank	100.00%	0.00%	0.00%	0.00%
Law, School of				
Professor	0.00%	95.00%	5.00%	0.00%
Associate professor	n/a	n/a	n/a	n/a
Assistant Professor	0.00%	100.00%	0.00%	0.00%
Other rank	0.00%	100.00%	0.00%	0.00%

The University of Texas at Austin AY 2012-2013	Exceeds expectations	Meets expectations	Does not meet expectations	Unsatisfactory
	4	3	2	1
Liberal Arts, College of				
Professor	45.91%	51.37%	2.72%	0.00%
Associate professor	30.05%	67.88%	2.07%	0.00%
Assistant Professor	21.74%	76.09%	2.17%	0.00%
Other rank	20.57%	78.01%	1.42%	0.00%
Natural Sciences, College of				
Professor	42.73%	55.00%	1.82%	0.45%
Associate professor	33.90%	64.41%	1.69%	0.00%
Assistant Professor	35.71%	64.29%	0.00%	0.00%
Other rank	30.12%	68.07%	1.81%	0.00%
Nursing, School of				
Professor	100.00%	0.00%	0.00%	0.00%
Associate professor	54.55%	45.45%	0.00%	0.00%
Assistant Professor	40.00%	60.00%	0.00%	0.00%
Other rank	51.35%	48.65%	0.00%	0.00%
Pharmacy, College of				
Professor	42.86%	52.38%	4.76%	0.00%
Associate professor	22.22%	44.45%	33.33%	0.00%
Assistant Professor	0.00%	66.67%	33.33%	0.00%
Other rank	37.04%	62.96%	0.00%	0.00%
Public Affairs, Lyndon B. Johnson School of				
Professor	12.50%	87.50%	0.00%	0.00%
Associate professor	20.00%	80.00%	0.00%	0.00%
Assistant Professor	0.00%	100.00%	0.00%	0.00%
Other rank	20.00%	80.00%	0.00%	0.00%
Social Work, School of				
Professor	41.67%	58.33%	0.00%	0.00%
Associate professor	42.86%	57.14%	0.00%	0.00%
Assistant Professor	0.00%	100.00%	0.00%	0.00%
Other rank	27.27%	63.64%	9.09%	0.00%
Institution				
Professor	45.26%	51.37%	3.26%	0.11%
Associate professor	35.97%	60.08%	3.75%	0.20%
Assistant Professor	40.17%	57.81%	2.02%	0.00%
Other rank	31.31%	67.38%	1.31%	0.00%

UT Austin Notes:

- 1) Results are for the 2012-2013 academic year.
- 2) Performance categories are different than the categories and ratings (1-5) noted in the original request.

Meeting of the U. T. System Board of Regents - Academic Affairs Committee

UT Brownsville
Faculty Annual Evaluations

AY 2012-2013	Outstanding Performance	Very Good Performance	Good Performance	Needs Improvement	Unsatisfactory
	5	4	3	2	1
College of Biomedical Sciences					
Professor	0	0	0	0	0
Associate professor	0	57	29	14	0
Assistant Professor	0	50	50	0	0
Other rank	0	100	0	0	0
College of Education					
Professor	40%	60%	%	%	%
Associate professor	21.43%	64.29%	%	14.28%	%
Assistant Professor	14.28%	78.58%	7.14%	%	%
Other rank	27.27%	72.73%	%	%	%
College of Nursing					
Professor	%	67%	33 %	%	%
Associate professor	%	67%	33 %	%	%
Assistant Professor	%	100%	%	%	%
Other rank	%	47%	53%	%	%
College of Science, Mathematics & Technology					
Professor	50%	50%	%	%	%
Associate professor	47%	37%	16%	%	%
Assistant Professor	39%	39%	17%	5%	%
Other rank	25%	45%	20%	10%	%
School of Business					
Professor	50%	50%	%	%	%
Associate professor	14 %	86%	%	%	%
Assistant Professor	33%	67%	%	%	%
Other rank	40%	40%	20%	%	%
Institution					
Professor	%	%	%	%	%
Associate professor	%	%	%	%	%
Assistant Professor	%	%	%	%	%
Other rank	%	%	%	%	%

	Satisfactory	Satisfactory with Recommendations	Unsatisfactory
	3	2	1
College of Liberal Arts			
Professor	96 %	4 %	%
Associate professor	100 %	%	%
Assistant Professor	96 %	%	4%
Other rank	82%	16 %	2%

Meeting of the U. T. System Board of Regents - Academic Affairs Committee

UT Dallas
Faculty Annual Evaluations

Calendar Year 2012	Exceeds Expectations	Meets Expectations	Does Not Meet Expectations	Unsatisfactory
	4	3	2	1
Arts & Humanities				
Professor	23%	77%	0%	0%
Associate Professor	43%	57%	0%	0%
Assistant Professor	13%	14%	0%	0%
Other rank	4%	94%	1%	0%
Behavioral & Brain Sciences				
Professor	48%	52%	0%	0%
Associate Professor	44%	56%	0%	0%
Assistant Professor	18%	82%	0%	0%
Other rank	56%	40%	4%	0%
Economic, Political & Policy Sciences				
Professor	50%	41%	5%	5%
Associate Professor	32%	64%	5%	0%
Assistant Professor	50%	40%	10%	0%
Other rank	20%	73%	5%	3%
Interdisciplinary Studies				
Professor	0%	100%	0%	0%
Associate Professor	100%	0%	0%	0%
Assistant Professor	0%	0%	0%	0%
Other rank	27%	73%	0%	0%
Jindal School of Management				
Professor	66%	34%	0%	0%
Associate Professor	23%	77%	0%	0%
Assistant Professor	5%	95%	0%	0%
Other rank	37%	63%	1%	0%
Jonsson School of Engineering & Computer Sciences				
Professor	43%	57%	0%	0%
Associate Professor	53%	44%	3%	0%
Assistant Professor	10%	90%	0%	0%
Other rank	50%	50%	0%	0%
Natural Sciences & Mathematics				
Professor	55%	45%	0%	0%
Associate Professor	46%	50%	4%	0%
Assistant Professor	23%	69%	8%	0%
Other rank	21%	77%	2%	0%
Institution				
Professor	48%	51%	0%	0%
Associate Professor	40%	58%	1%	1%
Assistant Professor	16%	82%	2%	0%
Other rank	28%	70%	2%	0%

Notes:**Professor, Associate, and Assistant Professor include only faculty in the Tenure System****Other rank category includes Non-Tenure System faculty**

Clinical Assistant Professor

Clinical Associate Professor

Clinical Professor

Lecturer (I or II)

Post Docs who taught 1 or more sections

Research Assistant Professor

Senior Lecturer (I, II, III)

Visiting Assistant Professor

Visiting Professor

Meeting of the U. T. System Board of Regents - Academic Affairs Committee

UT El Paso

Faculty Annual Evaluations

AY 2012-2013	Outstanding Performance	Very Good Performance	Good Performance	Needs Improvement	Unsatisfactory
	5	4	3	2	1
College of Business					
Professor	36%	50%	14%	0%	0%
Associate Professor	6%	47%	41%	6%	0%
Assistant Professor	0%	29%	64%	7%	0%
Other rank	0%	0%	0%	0%	0%
College of Education					
Professor	0%	17%	83%	0%	0%
Associate Professor	0%	61%	35%	4%	0%
Assistant Professor	0%	50%	50%	0%	0%
Other rank	0%	0%	0%	0%	0%
College of Engineering					
Professor	28%	44%	28%	0%	0%
Associate Professor	16%	52%	28%	4%	0%
Assistant Professor	10%	45%	45%	0%	0%
Other rank	0%	100%	0%	0%	0%
College of Health Sciences					
Professor	20%	80%	0%	0%	0%
Associate Professor	20%	80%	0%	0%	0%
Assistant Professor	11%	56%	33%	0%	0%
Other rank	11%	67%	11%	11%	0%
College Liberal Arts					
Professor	32%	53%	16%	0%	0%
Associate Professor	25%	52%	21%	2%	0%
Assistant Professor	37%	45%	18%	0%	0%
Other rank	30%	55%	16%	0%	0%
College of Science					
Professor	44%	47%	6%	3%	0%
Associate Professor	38%	59%	3%	0%	0%
Assistant Professor	27%	46%	27%	0%	0%
Other rank	0%	0%	0%	0%	0%
School of Nursing					
Professor	0%	100%	0%	0%	0%
Associate Professor	34%	33%	33%	0%	0%
Assistant Professor	0%	100%	0%	0%	0%
Other rank	5%	75%	16%	4%	0%
Institution					
Professor	23%	52%	24%	1%	0%
Associate Professor	20%	51%	27%	3%	0%
Assistant Professor	12%	53%	34%	1%	0%
Other rank	6%	38%	5%	1%	0%

UT Pan American
Faculty Annual Evaluations

AY 2012-2013	Exceeds Expectations	Meets Expectations	Does Not Meet Expectations	Unsatisfactory
The University of Texas-Pan American	4	3	2	1
College of Arts and Humanities	95.4%	4.6%		
Professor	96.3%	3.7%		
Associate professor	96.6%	3.4%		
Assistant Professor	97.6%	2.4%		
Other rank	91.1%	8.9%		
College of Business Administration	88.1%	11.9%		
Professor	100.0%			
Associate professor	100.0%			
Assistant Professor	87.0%	13.0%		
Other rank	50.0%	50.0%		
College of Education	96.7%	1.6%	1.6%	0.0%
Professor	100.0%			
Associate professor	95.2%	4.8%		
Assistant Professor	100.0%			
Other rank	90.9%		9.1%	
College of Engineering and Computer Science	88.5%	11.5%		
Professor	85.7%	14.3%		
Associate professor	100.0%			
Assistant Professor	81.3%	18.7%		
Other rank	83.3%	16.7%		
College of Health Sciences and Human Services	82.8%	14.9%	1.1%	1.1%
Professor	90.9%	9.1%		
Associate professor	89.5%	5.3%		5.3%
Assistant Professor	87.5%	6.3%	6.3%	
Other rank	75.6%	24.4%		
College of Science and Mathematics	74.0%	25.0%	1.0%	0.0%
Professor	90.0%	10.0%		
Associate professor	86.8%	10.5%	2.6%	
Assistant Professor	77.3%	22.7%		
Other rank	37.5%	62.5%		
College of Social and Behavioral Sciences	98.4%	1.6%		
Professor	100.0%			
Associate professor	95.7%	4.3%		
Assistant Professor	100.0%			
Other rank	100.0%			
University College (Previously Undergraduate Studies)	100.0%			
Professor				
Associate professor				
Assistant Professor				
Other rank	100.0%			
Institution (UTPA)	89.1%	10.2%	0.5%	0.2%
Professor	94.5%	5.5%		
Associate professor	94.2%	4.7%	0.5%	0.5%
Assistant Professor	90.5%	8.8%	0.7%	
Other rank	78.0%	21.4%	0.6%	

Meeting of the U. T. System Board of Regents - Academic Affairs Committee

UT Permian Basin
Faculty Annual Evaluations

AY 2012-2013	Outstanding Performance	Very Good Performance	Good Performance	Needs Improvement	Unsatisfactory
	5	4	3	2	1
College of Arts and Sciences					
Professor	8%	75%	8%	8%	
Associate professor		68%	32%		
Assistant Professor	7%	79%	7%	7%	
Other rank	13%	67%	20%		
College of Business and Engineering					
Professor	33%	67%			
Associate professor	50%	50%			
Assistant Professor	43%	14%	14%	29%	
Other rank	100%				
College of Education					
Professor		100%			
Associate professor		50%		50%	
Assistant Professor		33%	67%		
Other rank	50%	50%			
Institution					
Professor	13%	75%	6%	6%	
Associate professor	11%	63%	23%	3%	
Assistant Professor	15%	52%	22%	11%	
Other rank	29%	57%	14%		

UT San Antonio
Faculty Annual Evaluations

		Rating				Total
		Exceeds expectations	Meets expectations	Fails to meet expectations	Unsatisfactory	
College	Rank	%	%	%	%	%
Architecture	Professor	60%	40%	0%	0%	100%
	Associate Professor	88%	13%	0%	0%	100%
	Assistant Professor	63%	38%	0%	0%	100%
	Total	71%	29%	0%	0%	100%
Business	Professor	88%	12%	0%	0%	100%
	Associate Professor	70%	30%	0%	0%	100%
	Assistant Professor	68%	26%	5%	0%	100%
	Total	78%	21%	1%	0%	100%
Education & Human Development	Professor	78%	17%	6%	0%	100%
	Associate Professor	64%	36%	0%	0%	100%
	Assistant Professor	45%	55%	0%	0%	100%
	Total	62%	37%	1%	0%	100%
Engineering	Professor	55%	45%	0%	0%	100%
	Associate Professor	42%	58%	0%	0%	100%
	Assistant Professor	22%	78%	0%	0%	100%
	Total	38%	62%	0%	0%	100%
Liberal & Fine Arts	Professor	79%	21%	0%	0%	100%
	Associate Professor	79%	21%	0%	0%	100%
	Assistant Professor	86%	14%	0%	0%	100%
	Total	81%	19%	0%	0%	100%
Public Policy	Professor	89%	11%	0%	0%	100%
	Associate Professor	90%	0%	10%	0%	100%
	Assistant Professor	77%	23%	0%	0%	100%
	Total	84%	13%	3%	0%	100%
Sciences	Professor	88%	10%	2%	0%	100%
	Associate Professor	93%	7%	0%	0%	100%
	Assistant Professor	74%	26%	0%	0%	100%
	Total	88%	12%	1%	0%	100%
University College	Professor	100%	0%	0%	0%	100%
	Total	100%	0%	0%	0%	100%
Total	Professor	81%	18%	1%	0%	100%
	Associate Professor	77%	22%	1%	0%	100%
	Assistant Professor	63%	36%	1%	0%	100%
	Total	75%	25%	1%	0%	100%

Notes

- 1) Calendar Year 2012
- 2) Tenured and Tenure Track Faculty Only based on Fall 2012 CBM008
- 3) Includes all faculty with evaluations in the faculty evaluations database

UT Tyler
Faculty Annual Evaluations

AY 2012-2013	Exceeds Expectations	Meets Expectations	Does Not Meet Expectations	Unsatisfactory
	4	3	2	1
College of Education and Psychology				
Professor	93%	7%	0%	0%
Associate professor	90%	0%	0%	10%
Assistant Professor	87%	13%	0%	0%
Lecturer	86%	14%	0%	0%

AY 2012-2013	Outstanding Performance	Very Good Performance	Good Performance	Needs Improvement	Unsatisfactory
	5	4	3	2	1
College of Arts and Sciences					
Professor	57%	0%	29%	14%	0%
Associate professor	24%	52%	21%	0%	3%
Assistant Professor	25%	47%	19%	8%	0%
Lecturer	55%	35%	10%	0%	0%
CECS					
Professor	0%	0%	100%	0%	0%
Associate professor	0%	18%	82%	0%	0%
Assistant Professor	0%	7%	93%	0%	0%
Other rank	0%	17%	83%	0%	0%
College of Nursing & Health Sciences					
Professor	75 %	25%	%	%	%
Associate professor	72%	14%	14%	%	%
Assistant Professor	22%	66%	12 %	%	%
Clinical Instructor	8%	51%	718%	%	%
Lecturer	100%				
Visiting Professor	100%				
Clinical Associate	100%				

AY 2012-2013	Exceptional		Meritorious		Good Performance		Needs Improvement		Unsatisfactory
	8	7	6	5	4	3	2	1	0
College of Business									
Professor	16.66%	33.33%	16.66%	16.66%	16.66%				
Associate professor		12.50%	50.00%	37.50%					
Assistant Professor		6.66%	46.66%	33.30%		6.66%	6.66%		
Lecturer		50.00%		50.00%					

14. U. T. San Antonio: Presentation on the Prefreshman Engineering Program

REPORT

Dr. Raul A. Reyna, Executive Director of the U. T. San Antonio Prefreshman Engineering Program (PREP), TexPREP, and PREP-USA will give a presentation on the U. T. San Antonio PREP program, founded in 1979 by U. T. San Antonio mathematics professor, Dr. Manuel Berriozábal. Dr. Reyna's presentation is set forth on the following pages.

PREP is an intense, mathematics-based summer program that stresses the development of abstract reasoning and problem-solving skills.

In 1986, PREP was replicated statewide as the Texas Prefreshman Engineering Program (TexPREP) and is currently operational in 13 Texas cities.

In 1997, PREP-USA was established in a collaborative effort with U. T. San Antonio and three other Hispanic-serving colleges and universities across the United States to encourage junior high school and high school students to begin preparing for scientific and engineering career paths in school.

UTSA

The University of Texas at San Antonio™

Prefreshman Engineering Program (PREP)

Dr. Raul (Rudy) A. Reyna, Executive Director

U. T. System Board of Regents' Meeting

Academic Affairs Committee

May 2014

About PREP

- National program to prepare middle and high school students for Science, Technology, Engineering, and Mathematics (STEM) fields
- Emphasis on women and underrepresented minorities



History

- 1979: Dr. Berriozábal founded PREP at UTSA
- 1986: TexPREP established
- 1997: PREP-USA established



First 44 PREP graduates

Since 1979...

- 36,118 middle and high school students participated
- 81% minority groups
- 53% women



PREP Pipeline

Elementary
School

Systems Academy
for Young
Engineers and
Scientists

Middle
School

TexPREP
I, II & III

High School

TexPREP IV: Advanced
Science & Engineering

University PREP (summer)
College Credit

PREP
Ph.D.

(proposed)



TexPREP MODEL

- 7 to 8 week summer program
- Four year curriculum
- Career speakers
- Field trips
- Scholarships
- Program assistants/mentors
- Texas Education Agency credit



TexPREP Results

- 83% of the 17,716 students who are of college age go to college*
- 90% of college attendees go to Texas schools
- 54% of college attendees graduate from college

Data from Texas Higher Education Coordinating Board (THECB) and National Student Clearinghouse
*83% is a minimum number, as data is unavailable on remaining college students

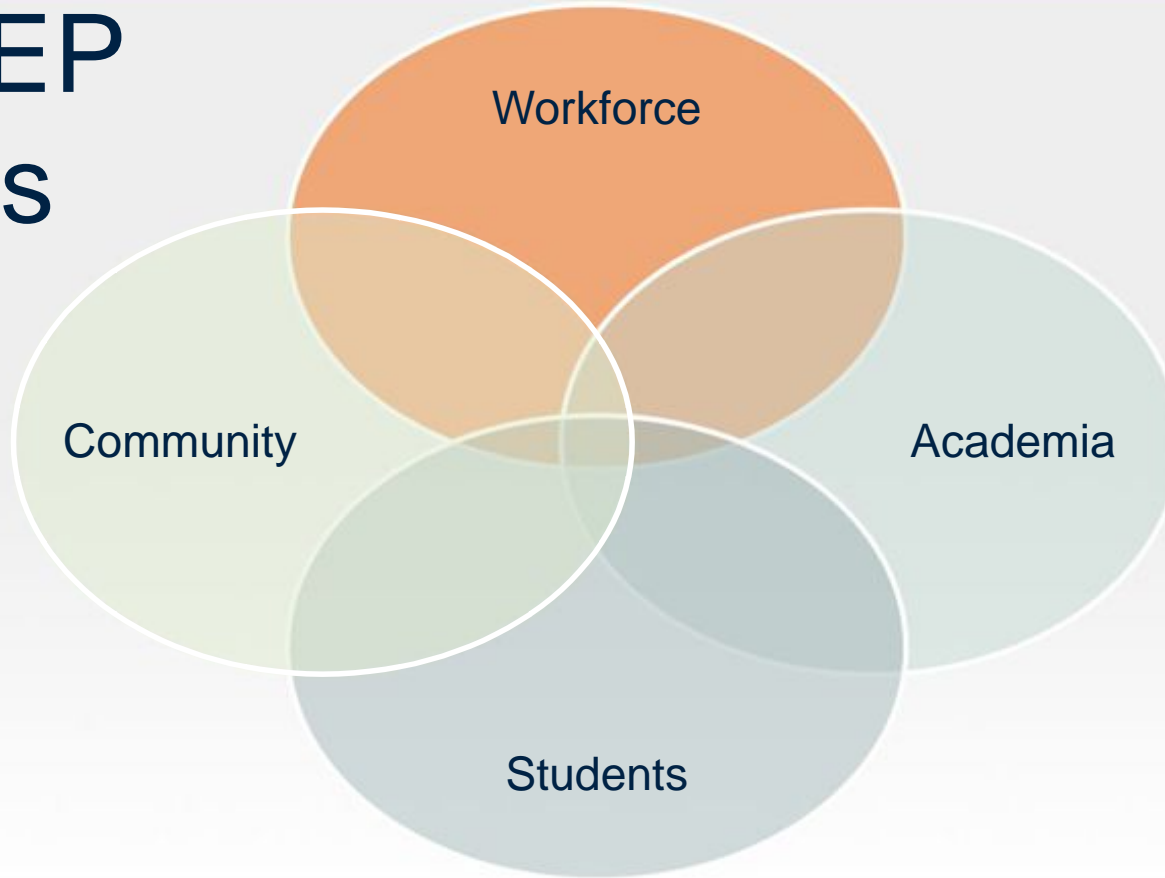
TexPREP Results (cont.)

- 73% of graduates are from minority groups
- 44% of college graduates major in STEM
- 48% of STEM graduates are female
- 67% of STEM graduates are minorities



Data from THECB and National Student Clearinghouse

TexPREP Benefits



192

TexPREP Locations



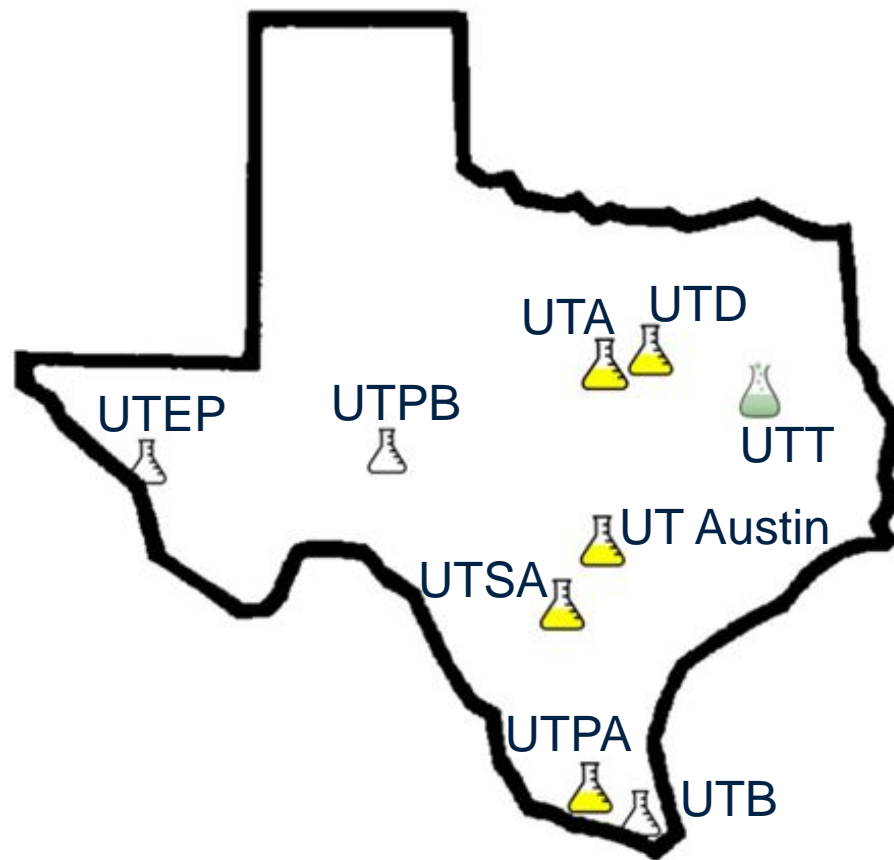
5 current



3 previous



1 future?



193

Moving TexPREP forward

- Add to network
- Expand current U. T. partner institutions
- U. T. medical schools
- TexPREP research with U. T. Austin Education Research Center
- Raise priority of TexPREP
- Increase scholarships



Testimonial

“I joined TexPREP with a different career plan in mind, but now long to become an engineer. I’m in a college-level pre-calculus and trigonometry class as a high school junior and I owe it all to TexPREP.”

- PREP III student, U. T. Pan American



Testimonial

“At PREP, it doesn’t matter what you look like, or what your background is. I learned that determination, education, and courage can take me anywhere. These past three years have been the most challenging, but also the best summers ever.”

- Student, U. T. San Antonio



15. **U. T. Austin: Approval of Charter Renewal Application for the University of Texas-University Charter School**

RECOMMENDATION

The Chancellor concurs in the recommendation of the Executive Vice Chancellor for Academic Affairs and President Powers that the U. T. System Board of Regents approve the charter renewal application for the University of Texas-University Charter School.

BACKGROUND INFORMATION

The Texas Education Agency application for renewal of the charter for the University of Texas-University Charter School (UT-UCS) requires at least a majority of the Board of Regents, as the governing body of the charter holder, to certify to the Commissioner of Education during an open meeting that it has reviewed the completed application and has signed and authorized submission of the application. The application is attached on the following pages.

The U. T. System Board of Regents authorized the original charter application with general oversight delegated to the institutional president and day-to-day oversight by the Executive Director of Continuing and Innovative Education. The School opened in 1998 with 75 students in grades 6-12 and has grown to 14 special purpose campuses across the State of Texas serving an average enrollment of 600 students. Because of the special nature of the University Charter School, there is a high student mobility rate resulting in over 2,000 students being served throughout the school year. Each campus is provided classrooms and office space by its facility partner. UT-UCS operates in a variety of settings, including:

- residential treatment centers;
- psychiatric hospitals;
- residential home for children who, for a variety of reasons, cannot live at home;
- shelter for families escaping domestic violence;
- home for girls in crisis pregnancies;
- medical facility for children who require specialized services due to brain injury or neuro-behavioral issues and/or who are considered medically fragile; and
- one elite gymnastics program.

The process for a 10-year charter renewal involves reviews by five divisions of the Texas Education Agency. Three special areas of accountability (student performance, business operations and fiscal management, and compliance) are examined.



THE UNIVERSITY OF TEXAS AT AUSTIN

William Powers, Jr., President
University Distinguished Teaching Professor
Hines H. Baker and Thelma Kelley Baker Chair in Law
Main Building 400 • PO Box T • Austin, Texas 78713-8920

Direct Number (512) 471-1232
Facsimile Number (512) 471-8102
president@po.utexas.edu

March 24, 2014

Received

MAR 28 2014

ACADEMIC AFFAIRS

Dr. Pedro Reyes
Executive Vice Chancellor for Academic Affairs
The University of Texas System
OHH 304 (P4300)

Dear Pedro:

I request that the charter renewal application of The University of Texas-University Charter School be considered by The University of Texas System Board of Regents at their May 14-15, 2014 meeting. The Texas Education Agency renewal application requires at least a majority of the Board of Regents, as the governing body of the charter holder, to certify that it has reviewed the completed application, and during an open meeting, has signed and authorized the submission of the application to the Commissioner of Education.

Mr. Jeffery D. Treichel, Executive Director *ad interim* of the Division of Continuing and Innovative Education, and Dr. Gwyn Boyter, Superintendent of the University Charter School, have reviewed and approved the attached renewal application, and I forward it to you with my approval.

If you have any questions, please contact Ms. Cynthia Sánchez by email at cynthia@po.utexas.edu or by phone at (512) 471-2311.

Sincerely,

A handwritten signature in black ink, appearing to read "Bill", written over a white background.

William Powers, Jr.
President

WP/cms

Enclosure

cc: Dr. Greg Fenves, Executive Vice President and Provost
Dr. Charles A. Roeckle, Deputy to the President
Mrs. Patricia Ohlendorf, Vice President for Legal Affairs
Mr. Jeffery D. Treichel, Executive Director *ad interim*,
Dr. Gwyn A. Boyter, Superintendent, University Charter School
Ms. Cynthia Sánchez, Executive Assistant, Office of the President



CONTINUING AND INNOVATIVE EDUCATION
Office of the Executive Director

P.O. Box 7817 • Austin, TX 78713-7817 • (512) 471-4652 • FAX (512) 475-7878
<http://www.utexas.edu/cie>

MEMORANDUM

DATE: March 11, 2014

TO: William Powers, Jr.
President

VIA: Greg Fenves,
Executive Vice President and Provost

FROM: Jeff D. Treichel
Executive Director, *ad interim*

RE: Renewal of Charter for University of Texas-University Charter School

The renewal for the charter for the University of Texas-University Charter School (UT-UCS) is due this year. I have reviewed and approve of the renewal application. The Advisory Board of UT-UCS will meet on April 2, 2014 and consider this application. I fully expect their approval of the application.

Please let me know if you should need additional information.

cc: Harrison Keller, Vice Provost
Gwyn Boyter, Superintendent

OPEN-ENROLLMENT CHARTER CONTRACT RENEWAL APPLICATION

Current Information in Charter School Tracking System

Charter Holder Name: UNIVERSITY OF TEXAS AT AUSTIN

Charter School Name: UNIVERSITY OF TEXAS UNIVERSITY CHARTER SCHOOL

Charter School County/District #: 227-806

Generation: E

Maximum Approved Enrollment: 2,000

Grades Approved: K,1,2,3,4,5,6,7,8,9,10,11,12

Campuses:

227806005 SETTLEMENT HOME 1600 PAYTON GIN RD AUSTIN, TX 78758 Grade Levels Currently Served: 07,08,09,10,11,12	227806009 PATHFINDER CAMP 20800 FM 150 WEST DRIFTWOOD, TX 78619-0040 Grade Levels Currently Served: 06,07,08,09,10,12
227806007 MERIDELL 12550 W HWY 29 LIBERTY HILL, TX 78642 Grade Levels Currently Served: KG,02,03,04,05,06,07,08,09,10,11,12	227806015 GEORGE M KOZMETSKY SCHOOL, THE 8750 N MO PAC EXPY STE 350 AUSTIN, TX 78759 Grade Levels Currently Served: KG,01,02,03,04,05,06,07,08,09,10,11,12
227806017 ANNUNCIATION MATERNITY HOME 3610 SHELL RD GEORGETOWN, TX 78628 Grade Levels Currently Served: 09,10,11,12	227806020 PEGASUS CAMPUS 896 Robin Ranch Road Lockhart, TX 78644 Grade Levels Currently Served: 04,05,06,07,08,09,10,11,12
227806023 PATHWAYS 3H CAMPUS 110 YOUTH RANCH CR PO BOX 230 MOUNTAIN HOME, TX 78058 Grade Levels Currently Served: 07,08,09,10,11	227806024 TNC CAMPUS (TEXAS NEUROREHABILITATION CENTER) 1106 W DITTMAR RD AUSTIN, TX 78745 Grade Levels Currently Served: 01,02,03,04,05,06,07,08,09,10,11,12

<p>227806025 METHODIST CHILDREN'S HOME 1111 HERRING AVE WACO, TX 76708 Grade Levels Currently Served: 07,08,09,10,11,12</p>	<p>227806029 DEPELCHIN-RICHMOND 710 S 7th ST RICHMOND, TX 77469 Grade Levels Currently Served: 01,02,03,05,06,07</p>
<p>227806030 LAUREL RIDGE 17720 CORPORATE WOODS DR SAN ANTONIO, TX 78259 Grade Levels Currently Served: KG,01,02,03,04,05,06,07,08,09,10,11,12</p>	<p>227806031 OLYMPIA HILLS 222 PARK 35 COVE N BUDA, TX 78610 Grade Levels Currently Served: 04,05,06,07,08</p>
<p>227806032 HELPING HAND 3804 AVENUE B AUSTIN, TX 78751 Grade Levels Currently Served: 01,02,03,04,05,06</p>	<p>227806034 UT - UNIVERSITY CHARTER SCHOOL AT HIGH POINT 1603 BABCOCK ROAD STE 148 SAN ANTONIO, TX 78229 Grade Levels Currently Served:</p>
<p>227806035 UT - UNIVERSITY CHARTER SCHOOL AT MEMORIAL HERMANN 3043 GESSNER RD HOUSTON, TX 77080 Grade Levels Currently Served:</p>	

Geographical Boundary:

The original charter application and amendment history reflects that the following district(s) comprise the charter school's geographic boundary:

- | | | |
|----------------------|---------------------------|-------------------|
| ALAMO HEIGHTS ISD | LA GRANGE ISD | SOUTHWEST ISD |
| AUSTIN ISD | LA VERNIA ISD | SPRING BRANCH ISD |
| AXTELL ISD | LACKLAND ISD | SWEETWATER ISD |
| BANDERA ISD | LAKE TRAVIS ISD | WACO ISD |
| BASTROP ISD | LAMAR CISD | WALLER ISD |
| BOERNE ISD | LEANDER ISD | WIMBERLEY ISD |
| BRENHAM ISD | LIBERTY HILL ISD | |
| COMAL ISD | LOCKHART ISD | |
| COUPLAND ISD | LULING ISD | |
| DEL VALLE ISD | LYTLE ISD | |
| DEVINE ISD | MANOR ISD | |
| DRIPPING SPRINGS ISD | MARION ISD | |
| EANES ISD | MEDINA VALLEY ISD | |
| EAST CENTRAL ISD | NATALIA ISD | |
| EDGEWOOD ISD | NEW BRAUNFELS ISD | |
| ELGIN ISD | NORTH EAST ISD | |
| FLORESVILLE ISD | NORTHSIDE ISD | |
| FT SAM HOUSTON ISD | PFLUGERVILLE ISD | |
| GEORGETOWN ISD | PLEASANTON ISD | |
| HARLANDALE ISD | RANDOLPH FIELD ISD | |
| HAYS CISD | ROUND ROCK ISD | |
| HONDO ISD | SAN ANTONIO ISD | |
| HOUSTON ISD | SAN MARCOS CISD | |
| HUTTO ISD | SCHERTZ-CIBOLO-U CITY ISD | |
| INGRAM ISD | SOMERSET ISD | |
| JARRELL ISD | SOUTH SAN ANTONIO ISD | |
| JUDSON ISD | SOUTHSIDE ISD | |

**Update to Data Provided by TEA
University of Texas-University Charter School
227806**

- 227806005
SETTLEMENT HOME
Correction: Grade Levels Currently Served
06, 07, 08, 09, 10, 11, 12
- 227806007
MERIDELL
Correction: Grade Levels Currently Served
KG, 01, 02, 03, 04, 05, 06, 07, 08, 09, 10, 11, 12
- 227806009
PATHFINDER CAMP
Correction: Grade Levels Currently Served
05, 06, 07, 08, 09, 10, 11, 12
- 227806015
GEORGE M KOZMETSKY SCHOOL, THE
Corrections:
Address
8701 N Mo Pac Expy Ste 350
Austin, TX 78759
- 27806017
ANNUNCIATION MATERNITY HOME
Correction: Grade Levels Currently Served
07, 08, 09, 10, 11, 12
- PEGASUS
Correction: Campus Closed. See attached letter
from Heather Mauzé.
- 227806023
PATHWAYS 3H
Correction: Grade Levels Currently Served
06, 07, 08, 09, 10, 11, 12
- 227806029
DEPELCHIN-RICHMOND
Correction: Grade Levels Currently Served
KG, 01, 02, 03, 04, 05, 06, 07, 08
- 227806031
OLYMPIA HILLS
Corrections:
New Address
2122 Green Meadows Ln
Buda, TX 78610
Grade Levels Currently Served
04, 05, 06, 07, 08, 09
- 227806032
HELPING HAND
Correction: Grade Levels Currently Served
KG, 01, 02, 03, 04, 05, 06
- 227806034
UT-UNIVERSITY CHARTER SCHOOL AT
HIGH POINT
Correction: Grade Levels Currently Served
01, 02, 03, 04, 05, 06, 07, 08, 09, 10, 11, 12
- 227806035
UT-UNIVERSITY CHARTER SCHOOL
MEMORIAL HERMANN
Corrections:
Address
3033 Gessner
Houston, TX 77080
Grade Levels Currently Served
08, 09, 10, 11, 12

Geographical Boundary

Missing:

1. Texas School for the Blind and Visually Impaired
2. Texas School for the Deaf

Please see attached listing from the TEA website in 2007-2008 or 2008-2009.



1701 North Congress Ave. • Austin, Texas 78701-1494 • 512 463-9734 • 512 463-9838 FAX • www.tea.state.tx.us

Michael L. Williams
Commissioner

December 30, 2013

CDN: 227-806

Dr. Gwyn A. Boyter
University of Texas University Charter School
P. O. Box 7667, UT Mail Code G4600
Austin, Texas 78713

Dear Dr. Boyter:

The commissioner has approved the following amendment requests:

- (308-13/1) UNIVERSITY OF TEXAS UNIVERSITY CHARTER SCHOOL to return campus 227-806-020, known as Pegasus Campus, effective June 30, 2013; and
- (309-13/1) UNIVERSITY OF TEXAS UNIVERSITY CHARTER SCHOOL to relocate campus 227-806-031, from 222 Park 35 Cove, Buda, Texas 78610, to 2122 Green Meadows, Buda, Texas 78610, upon receipt of an appropriate certificate of occupancy, effective January 8, 2014.

If you have any questions, please contact Nina G. Gonzalez in the Division of Charter School Administration by phone at (512) 463-9575 or via email at nina.gonzalez@tea.state.tx.us.

Sincerely,

A handwritten signature in black ink that reads "Heather Mauzé". The signature is written in a cursive style.

Heather Mauzé, Director
Division Charter School Administration

UNIVERSITY OF TEXAS UNIVERSITY CHARTER SCHOOL	227806	E	AUSTIN ISD
AXTELL ISD			
BASTROP ISD			
BRENHAM ISD			
COMAL ISD			
COUPLAND ISD			
DEL VALLE ISD			
DRIPPING SPRINGS ISD			
EANES ISD			
ELGIN ISD			
GEORGETOWN ISD			
HAYS CISD			
HOUSTON ISD			
HUTTO ISD			
INGRAM ISD			
JARRELL ISD			
LA GRANGE ISD			
LAKE TRAVIS ISD			
LAMAR CISD			
LEANDER ISD			
LIBERTY HILL ISD			
LOCKHART ISD			
LULING ISD			
MANOR ISD			
NEW BRAUNFELS ISD			
NORTH EAST ISD			
NORTHSIDE ISD			
PFLUGERVILLE ISD			
ROUND ROCK ISD			
SAN ANTONIO ISD			
SAN MARCOS CISD			
SCHERTZ-CIBOLO-U CITY ISD			
SWEETWATER ISD			
TEXAS SCH FOR THE BLIND & VISUALLY IMPAIRED			
TEXAS SCH FOR THE DEAF			
WACO ISD			
WALLER ISD			
WIMBERLEY ISD			

ATTACHMENT B

**OPEN-ENROLLMENT CHARTER SCHOOL
DETERMINATION OF APPLICABLE RENEWAL PROCESS**

NAME	CDN	APPLICABLE RENEWAL PROCESS
University of Texas University Charter School	227806	Discretionary

The determination of the applicable renewal process is based on the information detailed below. If any information contained in this document is incorrect, contact the Division of Charter School Administration no later than Thursday, March 20, 2014.

Academic Year	Accountability Ratings	Charter FIRST Ratings
2012-2013	Met Alternative Standard	Substandard Achievement
2011-2012	No Ratings Issued	Above Standard Achievement
2010-2011	Academically Acceptable	Standard Achievement
2009-2010	Academically Acceptable	Rating Not Used

The student performance and financial performance data in this document determines the renewal status of the charter: Expedited; Discretionary Consideration; or Expiration. In accordance with TEC §12.1141 (k), for purposes of determination, the initial three school years for which performance ratings under Subchapter C, Chapter 39, shall be considered are the 2009-2010, 2010-2011, and 2012-2013 school years, and the earliest school year for which financial accountability performance ratings under Subchapter D, Chapter 39, may be considered is the 2010-2011 school year.

Note that charters that are in the first five years of operation will only have four years of data, and if for any reason a charter was approved for an amendment to postpone opening, the charter may have fewer years of data.

Section II.**Contact Information**

The persons listed below will be contacted by agency staff if there are issues to be resolved in any of the renewal petition sections. Note that any contact information, including email addresses, provided with the renewal petition will be public information.

Superintendent Contact Information:

Superintendent's Name: Gwyn A. Boyter, Ph.D.
 Telephone Number: 512 471-4365
 Fax Number: 512 232-9177
 E-mail Address: gboyter@austin.utexas.edu

Charter Holder Board Chair Contact Information:

Board Chair's Name: Paul L. Foster
 Telephone Number: 512 499-4402
 Fax Number: 512 499-4425
 E-mail Address: bor@utsystem.edu

Petition Preparer's Contact Information:

Contact Name: Gwyn A. Boyter, Ph.D.
 Telephone Number: 512 471-4365
 Fax Number: 512 232-9177
 E-mail Address: gboyter@austin.utexas.edu

Charter School Website:

Web address: <http://ut-ucs.org>

Section III.
Website Postings

In accordance with the requirements of TEC §12.1211, an open-enrollment charter school shall list the names of the members of the governing body on the home page of the school's internet website. Provide the internet URL address where the names of the members of the governing body are listed.

http://www.ut-ucs.org/apps/pages/index.jsp?uREC_ID=207464&type=d&pREC_ID=458762

In accordance with the requirements of TEC §12.136, an open-enrollment charter school shall post the salary of the school's superintendent or CEO on the school's internet website. Provide the internet URL address where the superintendent's salary is posted.

http://www.ut-ucs.org/apps/pages/index.jsp?uREC_ID=207404&type=d&pREC_ID=458769

In accordance with Local Government Code §140.006, an open-enrollment charter school shall post continuously on the school's internet website the annual financials of the school. Provide the internet URL address where the annual financial statements of the charter school are continuously posted.

http://www.ut-ucs.org/apps/pages/index.jsp?uREC_ID=207130&type=d&pREC_ID=527942

Section IV.

Organizational Charts

Submit, as **Attachment 1**, the organizational chart for the charter school that specifies the administrative positions including the title and name of the individual currently in each position.

Submit, as **Attachment 2**, a chart that identifies all other entities under the direction of the charter holder. This would include entities and/or programs that the charter holder governs/manages in addition to the charter school.

Section V.

Admission Policy

Please be aware that any change to the terms of an open-enrollment charter that relates to the following subjects:

- grade levels,
- maximum enrollment,
- geographic boundaries,
- approved sites,
- school name,
- charter holder name,
- charter holder governance,
- articles of incorporation,
- corporate bylaws,
- management company,
- admission policy, or
- the educational program of the school

requires the commissioner of education's approval of a substantive amendment. (See §100.1033(c) Substantive Amendment, 19 TAC Chapter 100.)

A. Specify the period during which applications for admission are accepted. *TEC, §12.117, requires that a charter school establish a reasonable application deadline for the submission of applications for admission.*

Beginning of Period (Month/Day)	End of Period (Month/Day)
05/01	06/01

B. If the school admits students by lottery when the number of admissions applications received exceeds the number of available spaces, describe the procedures followed in conducting the lottery.

If there are more applications for admission than available positions in the school, names will be randomly selected using a lottery system. Student names that were not drawn are placed in a "waiting pool".

If a vacancy arises, a name will be randomly selected from this pool and that student will be offered the vacant position. This process will continue until a student accepts the slot. If no-one accepts the vacant slot, then enrollments will be accepted on a first-come, first-served basis.

C. If the school utilizes a lottery when oversubscribed, are any categories of applicants exempted from the lottery?

- Yes
- No
- Not applicable (because lotteries are not utilized)

If "Yes" was indicated in C above, state the categories of applicants that are exempted.

Students admitted to or attending and siblings of those students are exempted from the lottery.

Section V. (Continued)
Admission Policy

D. If the school utilizes a lottery when oversubscribed, specify the approximate date on which a lottery will be conducted.

Approximate Date of Lottery (Month/Day)

06/02

E. If the school does not utilize a lottery when oversubscribed, but rather fills the available positions in the order in which applications were received before the expiration of the application deadline (i.e., a "first-come, first-served" admission process), describe the manner in which the school notifies the community of the opportunity to apply for admission. *TEC, §12.117, requires a charter school that uses a first-come, first-served admission process when oversubscribed to publish a notice in a newspaper of general circulation not later than the seventh day before the application deadline.*

Not Applicable

F. If the school has a separate process for re-enrollment, state the process and the timeline to be used.

Students admitted to or attending may re-enroll for the next school year without entering the lottery process.

G. State the procedures for processing applications received once the application deadline has passed.

If the application deadline has passed, applications are accepted on a first-come, first-served basis if there is not a "waiting pool" and there is not a vacant slot in the appropriate grade level. If there is a vacancy in the appropriate grade level, the student may enroll.

H. Describe the information that an applicant must provide in order to be considered for admission. *Applicants may not be required to provide copies of transcripts or other academic records until after they are offered admission and are enrolling. Furthermore, a student may not be precluded from enrolling due to the charter school's failure to receive information required for enrollment from the student's parent or guardian or previous school. See TEC, §25.002.*

Parent Name, Child's Name, Date of Birth, Grade Level for the Requested School Year, Parent Signature, Date of Signature, Address, Home Phone, Cell Phone

Section V. (Continued)
Admission Policy

- I. The charter holder certifies that the non-discrimination statement required by TEC, §12.111(a)(6) is printed in the school's admission policy. *TEC, §12.111(6) requires that a charter school's admission policy include a statement that the school will not discriminate in admissions based on gender, national origin, ethnicity, religion, disability, academic, artistic, or athletic ability, or the district the child would otherwise attend.*
- Yes
 No
- J. Does the admission policy either require or permit the school to exclude from admission all students with documented histories of a criminal offense, a juvenile court adjudication, or discipline problems under TEC Chapter 37, Subchapter A as authorized by TEC, § 12.111(a)(6)?
- Yes (The school excludes such students or reserves the right to exclude such students from admissions.)
 No (The school does not deny admission to such students based on their documented histories of misconduct.)

Submit

- A current copy of the admission policy that incorporates the information provided in the above answers to questions A through H and any other relevant information (**Attachment 3**);
- A blank copy of the current admission application, i.e., the information requested when the student first seeks admission (**Attachment 4**); and
- A blank copy of the current enrollment form(s), i.e., the information required once an applicant has been offered admission and is registering for enrollment (**Attachment 5**)

Section VI.

Special Education Assurances

The charter holder certifies it has policies and procedures in place that ensure implementation of all federal laws and regulations, Texas laws, State Board of Education (SBOE) and commissioner of education rules related to students with disabilities and further certifies any future amendments to the laws, regulations, and rules will be incorporated and implemented.

Signature of Charter Holder Board Chair
(Must sign in blue ink)

Date

Paul L. Foster

Printed Name of Charter Holder Board Chair

Section VII.

Serving Students at Residential Facilities Assurances

If the charter school is not currently approved to serve students at residential facilities, do not provide a signature and indicate N/A on the signature line.

If operating a charter school campus on the site of a residential facility (RF) or serving students residing in or receiving services from an RF, the charter holder certifies by signing the assurance that:

Compliance with Special Education Requirements: The charter holder assures that it will comply with all of the requirements for the provision of educational services to students with disabilities as mandated by the Individuals with Disabilities Education Act, as amended, the Texas Education Code, and federal and state special education regulations. The charter holder acknowledges that state and federal special education requirements require, among other things, it provide a free and appropriate public education (FAPE) in the least restrictive environment (LRE) to students with disabilities residing in RFs. The charter holder further assures that it will provide, or seek the provision of, a FAPE to students with disabilities, which may require it to contract with outside service providers or another local educational agency to provide necessary services and supports to students with disabilities.

Geographic Boundaries: The charter holder assures that it will accept students who reside in the school district(s) that are within each campus's geographic boundaries regardless of the presence or absence of a disability or admission to or participation in an RF program.

Admissions Criteria: The charter holder assures that its admissions criteria will not be based on the presence or the absence of a disability; or on gender; national origin; ethnicity; religion; academic; artistic or athletic ability; or the home district the child would otherwise attend.

School Choice: The charter holder assures that parents/legal guardians (or adult students) will be advised that they may choose to enroll their child in either the charter school or the local public school district and that the elected choice will be documented in writing and filed for purposes of review or audit by the Texas Education Agency (TEA), an external auditor, or an other entity.

Residential Facilities Monitoring (RFM) System: The charter holder assures that it understands that, pursuant to 19 Texas Administrative Code (TAC) §97.1072, there is a specific system for monitoring school districts and charter schools serving students with disabilities who reside in RFs. The charter holder further assures that it understands it will be required to report data related to students with disabilities residing in RFs in TEA's data collection system known as *RF Tracker* and it may be subject to RFM intervention activities and on-site visits based upon a review of the data reported on a random selection or other means of selection.

Training: The charter holder assures that all personnel involved with serving students with disabilities residing in a RF and personnel involved with reporting data in *RF Tracker* will receive training on the RFM system. Please contact your regional Educational Service Center for information regarding the required RFM system training.

Section VII. (Continued)

Serving Students at Residential Facilities Assurances

The charter holder assures this assurance document has been shared with, and understood by, the RF board and that the RF board has acknowledged its understanding of all federal laws and regulations, Texas laws, State Board of Education (SBOE) and commissioner of education rules related to charter schools serving students at residential facilities and further certifies that any future amendments to the laws, regulations, and rules will be incorporated and implemented.

Signature of Charter Holder Board Chair
(Must sign in blue ink)

Date

Paul L. Foster

Printed Name of Charter Holder Board Chair

**Please write N/A in the signature line
if the charter does not serve students at residential facilities.**

Section VIII.

Bilingual/ESL, Section 504, and Dyslexia Assurances

TEC, Chapter 29, Subchapter B, TEC §12.104(b)(2)(G), and 19 TAC §§89.1201-.1265 require charter schools to identify limited English proficient students based on state criteria and to provide an appropriate bilingual education or English as a second language program conducted by teachers certified for such courses.

A. The charter holder certifies it has policies and procedures in place to ensure it complies with the legal and regulatory requirements concerning identifying and providing appropriate educational services to limited English proficient students.

- Yes
- No

Section 504 of the Rehabilitation Act of 1973, *29 U.S.C. §794*, prohibits discrimination on the basis of disability in any program receiving federal financial assistance. A recipient that operates a public education program or activity shall provide a free, appropriate public education to qualified individuals.

B. The charter holder certifies it has policies and procedures in place to ensure it complies with the legal and regulatory requirements concerning identifying and providing appropriate educational services to students protected by Section 504.

- Yes
- No

TEC §38.003, TEC §12.104(b)(2)(K), 19 TAC §74.28 and Section 504 of the Rehabilitation Act of 1973, *29 U.S.C. §794*, require charter schools to identify students with dyslexia or related disorders and to provide appropriate educational services.

C. The charter holder certifies it has policies and procedures in place to ensure it complies with the legal and regulatory requirements concerning identifying and providing appropriate educational services to students with dyslexia or related disorders.

- Yes
- No

I further certify that any future amendments to the laws, regulations, and rules will be incorporated and implemented.

Signature of Charter Holder Board Chair
(Must sign in blue ink)

Date

Paul L. Foster

Printed Name of Charter Holder Board Chair

Section IX.

Fingerprinting and Criminal Record Check Assurance

The charter holder certifies it is in compliance with TEC §12.120, and confirms that no individual is serving in any capacity if he or she has been convicted of a misdemeanor involving moral turpitude; a felony; an offense listed in TEC §37.007(a); or an offense listed in Article 62.001(5) Code of Criminal Procedures; unless the individual is eligible to be employed in a position in a school district under TEC §12.120 (a-1).

Additionally, the charter holder confirms all current fingerprinting and criminal record checks are available for all employees, including contract employees; volunteers who indicated in writing their intention to serve; board members; and officers of the charter holder who are not on the board, in compliance with TEC §§12.1059, 22.0832-22.0835.

Signature of Charter Holder Board Chair
(Must sign in blue ink)

Date

Paul L. Foster

Printed Name of Charter Holder Board Chair

Section X.

Certificate of Acknowledgement

This section requires at least a majority of the governing body of the charter holder to certify it has had an opportunity to review the completed renewal petition and has authorized, during an open meeting, submission of the petition to the commissioner of education for consideration of renewal of the charter.

CERTIFICATE OF ACKNOWLEDGEMENT

The undersigned members of the governing body of the charter holder hereby acknowledge that they have had an opportunity to review the completed renewal petition and have authorized its submission, during an open meeting, to the commissioner of education for consideration of the renewal of the charter:

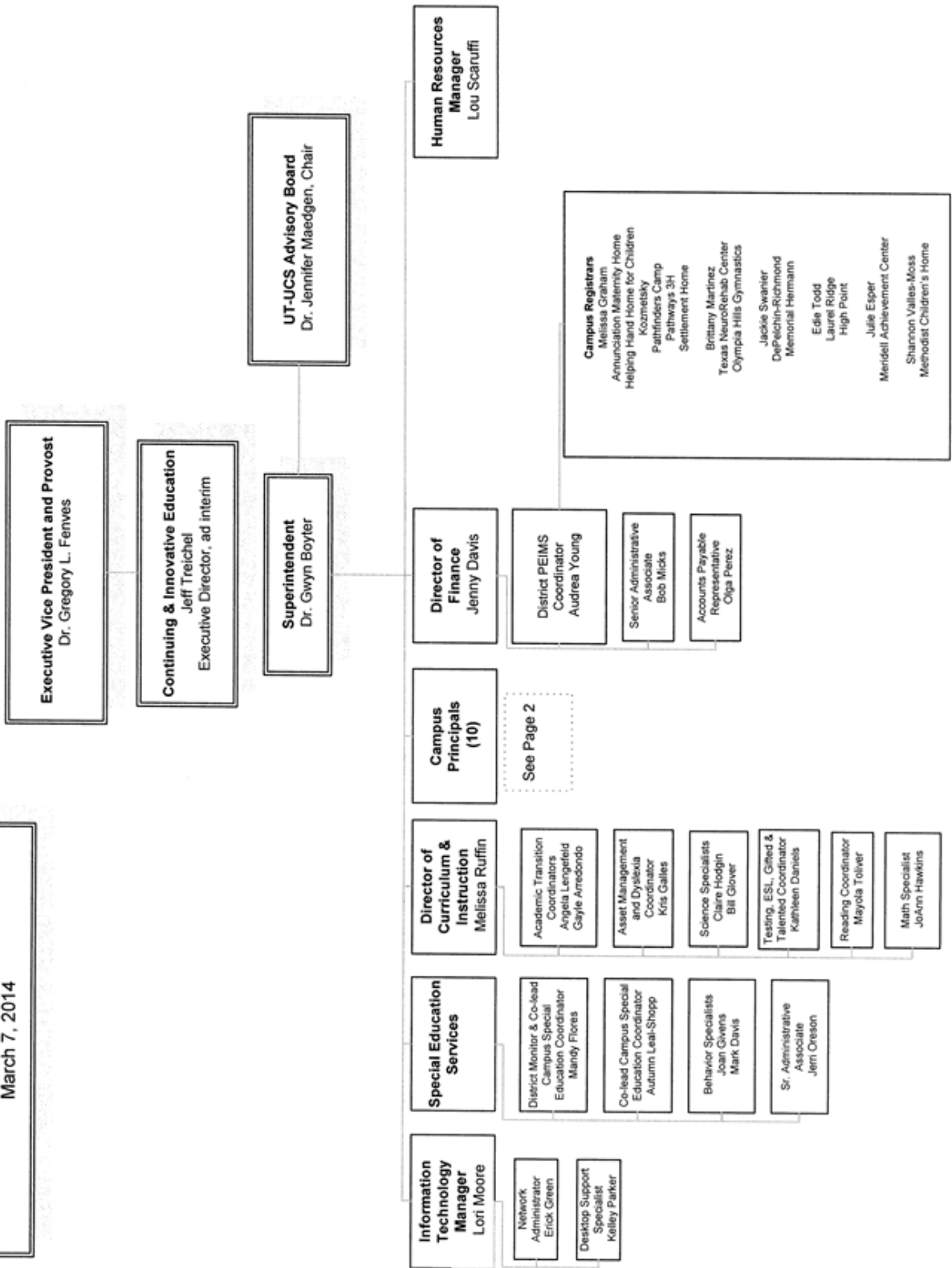
Typed Name (Type name next to corresponding signature)	Signature (Must sign in blue ink)	Date*
Ernest Aliseda		
Alex M. Cranberg		
Paul L. Foster		
Wallace L. Hall, Jr.		
R. Steven Hicks		
Jeffery D. Hildebrand		
Nash M. Horne		
Brenda Pejovich		
Wm. Eugene Powell		
Robert L. Stillwell		

**Members are to sign the acknowledgement during an open meeting; therefore, the date next to each signature must reflect the date of the meeting.*

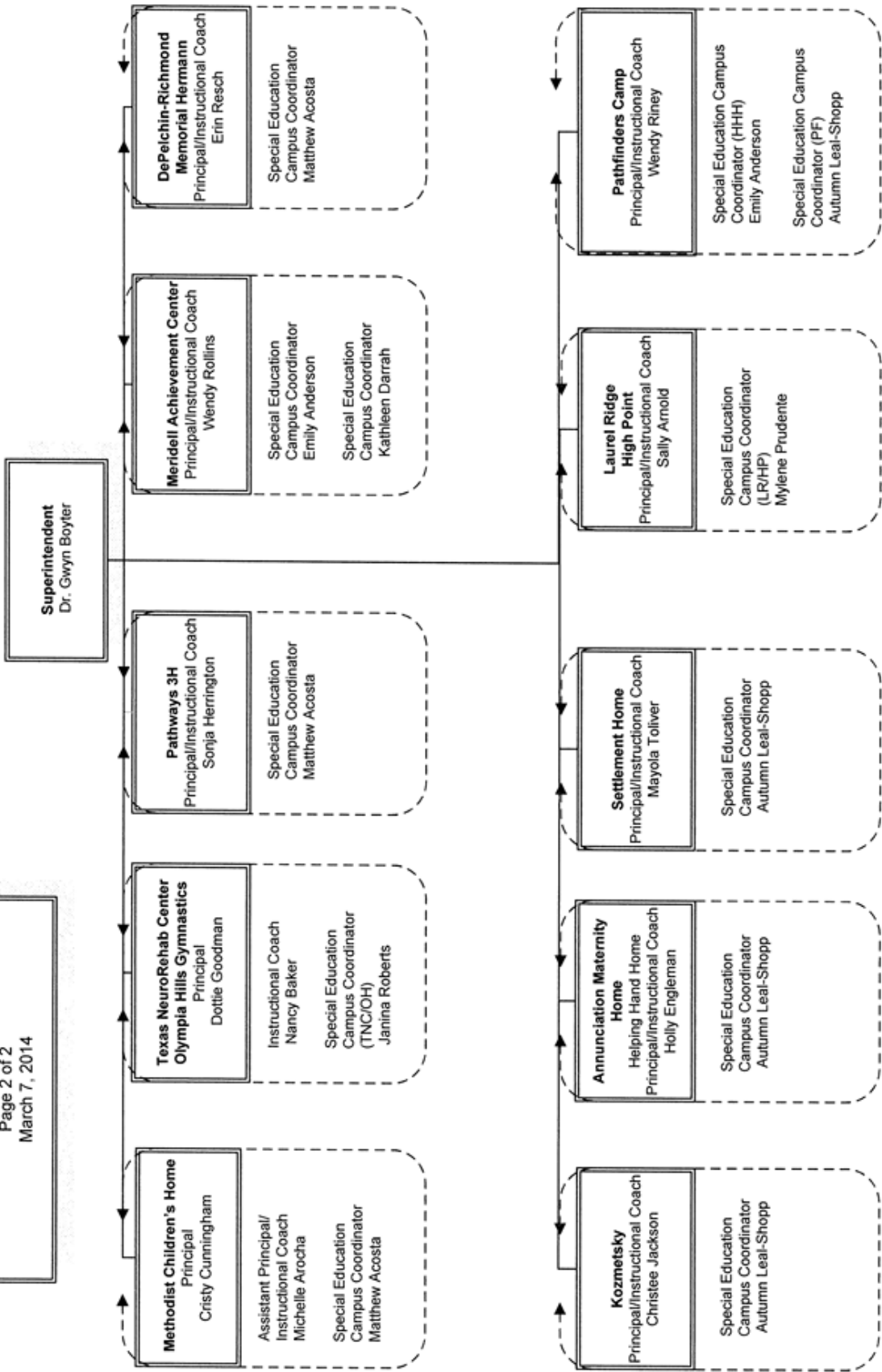
University of Texas-University Charter School
Contract Renewal Application

Attachment 1
Organizational Chart of the Charter School

**University of Texas-University Charter School
Organization Chart
Page 1 of 2
March 7, 2014**



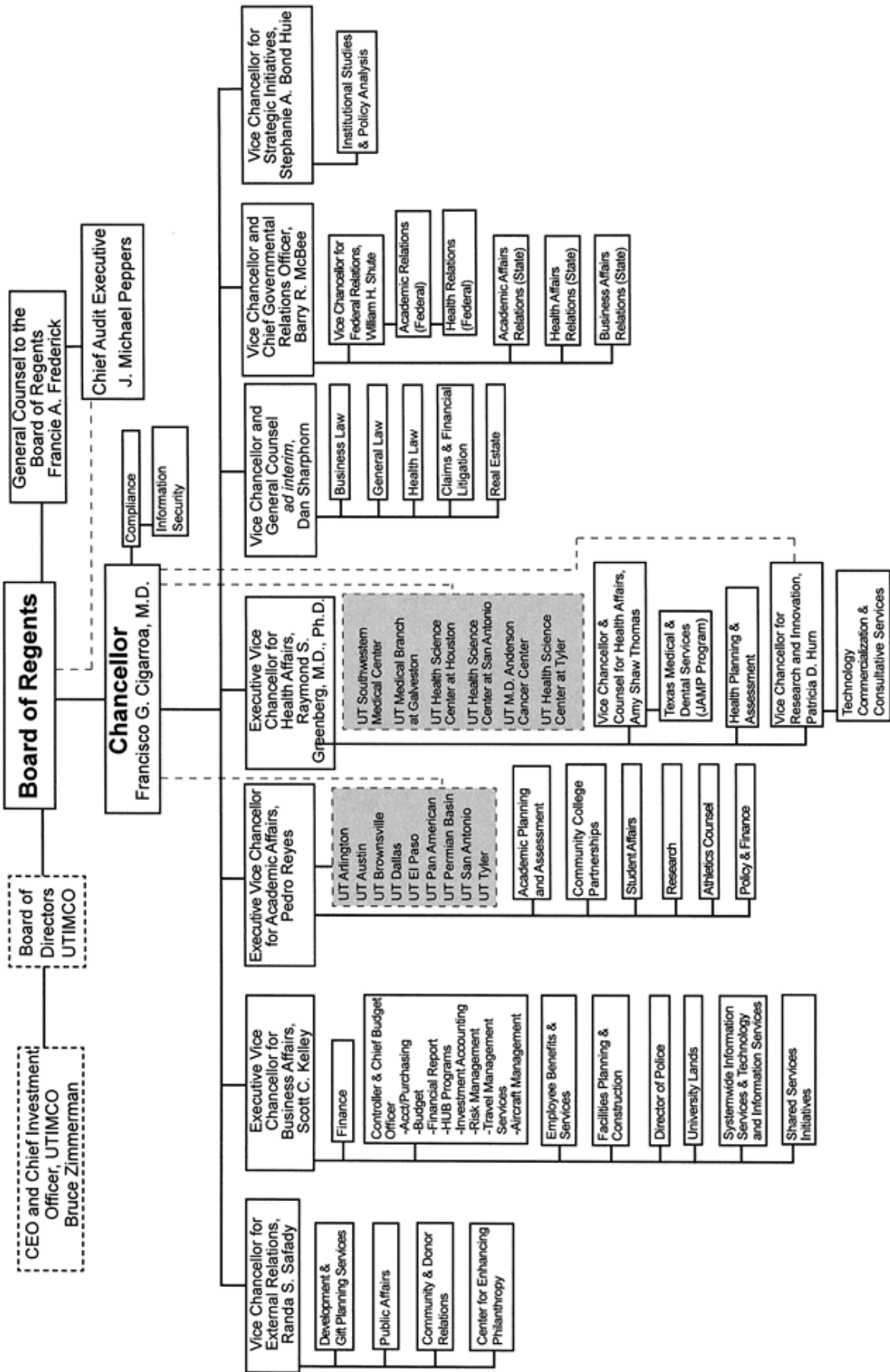
University of Texas-University Charter School
 Organization Chart
 Page 2 of 2
 March 7, 2014



University of Texas-University Charter School
Contract Renewal Application

Attachment 2
Chart Showing Additional Involvement by Charter Holder

The University of Texas System Organization



University of Texas-University Charter School
Contract Renewal Application

Attachment 3
Admission Policy

The following information should be used to replace the section titled “Admissions Policy” on Pages 40-41 of the Charter Application.

11. Admissions Policy

UT-UCS campuses are located at residential treatment and special day program facilities. As an open-enrollment charter school, UT-UCS provides an education option for students residing within the boundaries of the school districts where UT-UCS campuses are located, if that option is determined appropriate by the parent or guardian.

Open Enrollment: As an open-enrollment charter school, UT-UCS admits any student who resides within the established geographic boundaries of the campus and is in the grades served by the UT-UCS campus regardless of gender or presence or absence of a disability. UT-UCS does not accept transfer students who reside outside the property boundaries of the UT-UCS campus, and no UT-UCS campus charges tuition for the educational portion of the program.

Enrolling students who reside in a residential treatment facility: Placement at a residential treatment facility is a separate issue from enrolling a student in the UT-UCS educational program. Students are placed at a residential treatment facility by parents/guardians, the Texas Department of Protective and Regulatory Services, Child Protective Services, the Texas Youth Commission, Texas Juvenile Commission, doctors, or other state agencies working with children and youth. Parents/guardians may enroll their child in the UT-UCS campus at the facility or the local school district.

Enrolling students who attend a special day program: Parents who live within the geographical boundaries of a special day program have the option of enrolling their child in the UT-UCS campus or the local school district. A student is ineligible for admission in a special day program during the term of the student’s placement by another school district or charter school in a Disciplinary Alternative Education Program (“DAEP”) or Juvenile Justice Alternative Education Program (“JJAEP”), or during the student’s expulsion from any school, regardless of whether the student withdrew from the transferring school in lieu of such placement or expulsion.

After the parent/guardian chooses to enroll the student at UT-UCS, the ARD committee meets to review individual needs of students with disabilities, develop a plan to meet those needs—with children who are non-disabled to the maximum extent appropriate—and to ensure that each child with a disability participates with non-disabled children in non-academic and extracurricular services and activities to the maximum extent appropriate to the needs of that child. If a parent/guardian of a child residing at a residential treatment facility chooses to enroll their child at the local school district rather than the UT-UCS charter school, it is between the facility and the local school district to determine how the local school district will provide services to the student and in the least restrictive environment, which could include services at the facility.

The UT-UCS application period for student enrollment will be from May 1st to June 1st of each school year. As part of its admissions policy UT-UCS will conduct a lottery process. If there are more applications for admission than available positions in the school, names will be randomly selected using a lottery system. Student names that were not drawn will be placed in a “waiting pool”. Total enrollment for the UT-UCS charter is specified at 2,000 students.

UT-UCS and any entities contracting with the UT-UCS prohibit discrimination on the basis of sex, national origin, ethnicity, religion, disability, academic, artistic, or athletic ability, or the district the child would otherwise attend. The UT-UCS education program is secular, neutral, and non-ideological in all respects.

400.020. ADMISSIONS & ENROLLMENT

Pursuant to a delegation amendment to the UT-UCS charter approved by the commissioner of education, the Advisory Board ("Board") of UT-UCS recommends the following policy, which shall be effective on the date that the policy is approved by the Chief Executive Officer ("CEO") of UT-UCS.

SECTION 1. Admissions

Section 1.1. Non-Discrimination Policy. UT-UCS's admissions and enrollment shall be free from discrimination based on sex, national origin, ethnicity, religion, disability, academic, artistic, athletic ability, or the district the child would otherwise attend under state law.

Section 1.2. Admission Application Deadline. UT-UCS's admission application period is from May 1st through June 1st.

Section 1.3. Exclusion from Admission. In accordance with a charter amendment approved by the commissioner of education, UT-UCS reserves the right to exclude from admission a student who is not in treatment with a facility and who has a documented history of a criminal offense, a juvenile court adjudication, or discipline problems under the Education Code, Chapter 37, Subchapter A.

Section 1.4 Acceptance Procedure The application period for student enrollment will be from May 1st to June 1st of each school year. As part of its admissions policy UT-UCS will conduct a lottery process. If there are more applications for admission than available positions in the school, names will be randomly selected using a lottery system. Student names that were not drawn will be placed in a "waiting pool".

If a vacancy arises, a name will be randomly selected from this pool and that student will be offered the vacant position. This process will continue until a student accepts the slot. If no-one accepts the vacant slot, then enrollments will accepted on a first-come, first-served basis.

If the application deadline has passed, applications are accepted on a first-come, first-served basis if there is not a "waiting pool" and there is not a vacant slot in the appropriate grade level. If there is a vacancy in the appropriate grade level, the student may enroll.

A notice of the application deadline will be placed in a newspaper of general circulation in the community in which the school is located. The notice must be published not later than seven calendar days before the application deadline and must include the date of the application deadline.

Students admitted to or attending and siblings of those students are exempted from the lottery

University of Texas-University Charter School
Contract Renewal Application

Attachment 4
Admission Application



Intent to Enroll for the 2013-2014 School Year

University of Texas-University Charter School

I _____ intend to enroll my child
Parents Name Printed

_____ DOB ____/____/____
Child's Name Child's Date of Birth

Grade Level for 13-14 school year: _____ at the
University of Texas-University Charter School for the 2013-2014 school
year.

I understand that completion of this form is not a guarantee of
admission.

Parent's Signature:

_____ _____
Parent's Signature Date

Address: _____

Home Phone: (____)____-____

Cell Phone: (____)____-____

Please return this form to the campus principal or
campus clerk on or before:

Friday, May 31st, 2013

You can fax the form to 512.462.6665 or
email it to audreayoung@austin.utexas.edu

University of Texas-University Charter School
Contract Renewal Application

Attachment 5
Enrollment Form(s)



University of Texas-University Charter School-Enrollment Form, Pg 1

P.O. Box 7667 | Austin, Texas 78713-7667 | (512)232-6403 phone | (512)232-9177 fax

ENROLLMENT OPTION:
Signature required on page 1 (Enrollment Option) and Page 2 (False Information Statement)

I have been informed of the option of enrolling the student in the local public school district. I understand University of Texas- University Charter School is an educational option. The UT-UCS Student Guidelines for 2013-2014 are available on the district website: <http://ut-ucs.org/>

Signature of Guardian with educational decision making rights:

Signature: _____ **Date:** _____

STUDENT INFORMATION: (Please Print Clearly and use Black/Blue Ink only)

UT-UCS Campus Name:		Grade Level:
Last Name:		Gender: <input type="checkbox"/> Male <input type="checkbox"/> Female
First Name:	Middle Name:	Date of Birth:
Social Security #:	Is student: Spec Ed: <input type="checkbox"/> Bil/Esl: <input type="checkbox"/> 504: <input type="checkbox"/>	1 st Date of Instruction:

Has student attended UT-UCS before? Y N If Yes, name of campus

PREVIOUS SCHOOLS ATTENDED:

School Name1:	Phone Number:
School Address1: (City State, Zip)	Phone Number:
School Name2: (If applicable)	Phone Number:
School Address2: (City State, Zip)	Phone Number:

Is another school district funding this student's residential placement? Y N
 If Yes, name of district? (include city/state)

GUARDIAN INFORMATION:

Last Name:		First Name:
Date of birth:	Primary Phone:	Secondary Phone:
Relationship To Student:		Email Address:
Do you have educational decision making rights for the student? <input type="checkbox"/> Y <input type="checkbox"/> N If No, attach Court Order.		
Does Guardian reside outside local school district where facility lies? <input type="checkbox"/> Y <input type="checkbox"/> N		
Physical Address		Mailing Address: <input type="checkbox"/> Same
Street:		
City, State, Zip:		



University of Texas-University Charter School-Enrollment Form, Pg 2

P.O. Box 7667 | Austin, Texas 78713-7667 | (512)232-6403 phone | (512)232-9177 fax

Student's Last Name:	First Name:	Date of Birth:
OTHER INDIVIDUALS ASSISTING/REPRESENTING STUDENT'S INTEREST		
Is student assisted by or represented by any of the following agencies or individuals?		
<input type="checkbox"/> Yes <input type="checkbox"/> No <u>Custodial Guardian living at different address:</u> <input type="checkbox"/> Send Educational Information		
Name: _____		
Address: _____		
Phone: _____	Email: _____	
<input type="checkbox"/> Yes <input type="checkbox"/> No <u>Court appointed surrogate or guardian:</u> <input type="checkbox"/> Send Educational Information		
Name: _____		
Address: _____		
Phone: _____	Email: _____	
<input type="checkbox"/> Yes <input type="checkbox"/> No <u>Attorney ad litem:</u> <input type="checkbox"/> Send Educational Information		
Name: _____		
Address: _____		
Phone: _____	Email: _____	
<input type="checkbox"/> Yes <input type="checkbox"/> No <u>Probation Officer:</u> <input type="checkbox"/> Send Educational Information		
Name: _____		
Address: _____		
Phone: _____	Email: _____	
<input type="checkbox"/> Yes <input type="checkbox"/> No <u>Supporting agency such as CASA, MHMR, DARS...</u> <input type="checkbox"/> Send Educational Information		
Name: _____		
Address: _____		
Phone: _____	Email: _____	
MEDICAL INFORMATION:		
Had Varicella (Chicken pox)? <input type="checkbox"/> Y <input type="checkbox"/> N Date: _____		Medical Conditions/Food Allergies: _____
MEDICAL /EMERGENCY INFO: Please complete if enrolled at: Annunciation, Kozmetsky, NEG, TNC, Olympia Hills, L.Ridge.		
Family Physician Name:	Physician's Phone:	Hospital of Choice:
Other Contacts:	Daytime Phone:	Relationship To Student:
Medical Authorization- By signing you are authorizing, in absence of listed persons, school officials to render such treatment as may be deemed necessary in an emergency for the health of the student.		
Signature: _____		Date: _____
FALSE INFORMATION STATEMENT: Signature required on page 1 (Enrollment Option) and Page 2 (False Information Statement)		
I certify I am the parent, guardian or person having lawful control of the student named on the enrollment form. I further certify this student, in my charge, meet all other qualifications for enrollment and have not knowingly falsified any information provided on this enrollment form.		
Full Name (Signature): _____		Relationship: _____





University of Texas-University Charter School
P.O. Box 7667 Austin, Texas 78713-7667 (512)232-6403 phone (512)232-9177 fax

HOME LANGUAGE SURVEY

This form is to be completed for all students new to UT- UCS, all grade levels.

STUDENTS' NAME: Last/Apellido First/Nombre M.I./Segundo Nombre

DATE OF BIRTH: Month/Mes Day/Dia Year/Año ID#

Campus/Escuela Teacher/Maestra/o Grade/Grado

HOME LANGUAGE SURVEY/Informacion sobre el idioma que se habla en casa

- 1. What language is spoken in your home most of the time?
2. What language does the student speak most of the time?

If a language other than English is marked in question 1 or 2 above, please complete the questions below.

3. Student's country of Birth/Pais Natal:

4. Is the student a citizen of the U. S. A.?
Es el estudiante ciudadano de los Estados Unidos de American?

5. Date of FIRST ENTRY into ANY SCHOOL in the U.S.A.
Fecha de PRIMER ingreso en CUALQUIER escuela en los Estados Unidos de America.

Signature of Parent/Guardian: Date:
Firma de Padre/Guardian:



2013-2014 Texas Minimum State Vaccine Requirements for Students Grades K-12

This chart summarizes the vaccine requirements incorporated in the Texas Administrative Code (TAC), Title 25 Health Services, Sections 97.61 to 97.72. This chart is not intended as a substitute for consulting the TAC, which has other provisions and details. [Click here for complete TAC language.](#)

The Department of State Health Services (DSHS) is granted authority to set immunization requirements by the Texas Education Code, Chapter 38, Health & Safety, Subchapter A, General Provisions.

IMMUNIZATION REQUIREMENTS

A student shall show acceptable evidence of vaccination prior to entry, attendance, or transfer to a child-care facility or public or private elementary or secondary school in Texas.

Vaccine Required (Attention to notes and footnotes)	Minimum Number of Doses Required by Grade Level					NOTES
	K - 4 th	5 th - 6 th	7 th	8 th - 11 th	12 th	
Diphtheria/Tetanus/Pertussis (DTaP/DTP/DT/Td/Tdap) ¹	5 doses or 4 doses	5 doses or 4 doses	3 dose primary series and 1 Tdap/Td booster <i>within last 5 years</i>	3 dose primary series and 1 Tdap/Td booster <i>within last 10 years</i>		Five (5) doses of diphtheria-tetanus-pertussis vaccine; one dose must have been received on or after the 4 th birthday. However, four doses meet the requirement if the 4 th dose was received on or after the 4 th birthday. For students aged 7 years and older, three doses meet the requirement if one dose was received on or after the 4 th birthday. For 7th grade: one dose of Tdap is required if at least 5 years have passed since the last dose of tetanus-containing vaccine. For 8th - 12th grade: one dose of Tdap is required when 10 years have passed since the last dose of tetanus-containing vaccine. Td is acceptable in place of Tdap if a medical contraindication to pertussis exists.
Polio ¹	4 doses or 3 doses	4 doses or 3 doses	4 doses or 3 doses	4 doses or 3 doses	4 doses or 3 doses	Four (4) doses of polio; one dose must be received on or after the 4 th birthday. However, three doses meet the requirement if the 3 rd dose was received on or after the 4 th birthday.
Measles, Mumps, and Rubella ^{1,2} (MMR)	2 doses	2 doses	2 doses	2 doses	2 doses	The 1 st dose of MMR must be received on or after the 1 st birthday. For K - 4th grade, two doses of MMR are required. For 5th - 12th grade, two doses of a measles-containing vaccine, and one dose each of rubella and mumps vaccine is required.
Hepatitis B ²	3 doses	3 doses	3 doses	3 doses	3 doses	For students aged 11 - 15 years, two doses meet the requirement if adult hepatitis B vaccine (Recombivax) was received. Dosage and type of vaccine must be clearly documented. Two (2) 10 mcg/1.0 ml of Recombivax).
Varicella ^{1,2,3}	2 doses	1 dose	2 doses	2 doses	1 dose	The 1 st dose of varicella must be received on or after the 1 st birthday. For grades K - 4th and 7th - 11th, two doses are required. One (1) dose is required for all other grade levels. For any student who receives the 1 st dose on or after 13 years of age, two doses are required.
Meningococcal				1 dose		
Hepatitis A ^{1,2}	2 doses					The 1 st dose of hepatitis A must be received on or after the 1 st birthday.

¹ Receipt of the dose up to (and including) 4 days before the birthday will satisfy the school entry immunization requirement.

² Serologic confirmation of immunity to measles, mumps, rubella, hepatitis B, hepatitis A, or varicella or serologic evidence of infection is acceptable in place of vaccine.

³ Previous illness may be documented with a written statement from a physician, school nurse, or the child's parent or guardian containing wording such as: "This is to verify that (name of student) had varicella disease (chickenpox) on or about (date) and does not need varicella vaccine." This written statement will be acceptable in place of any and all varicella vaccine doses required.

Exemptions

The law allows (a) physicians to write a statement stating that the vaccine(s) required would be medically harmful or injurious to the health and well-being of the child or household member, and (b) parents/guardians to choose an exemption from immunization requirements for reasons of conscience, including a religious belief. The law does not allow parents/guardians to elect an exemption simply because of inconvenience (for example, a record is lost or incomplete and it is too much trouble to go to a physician or clinic to correct the problem). Schools and child-care facilities should maintain an up-to-date list of students with exemptions, so they may be excluded in times of emergency or epidemic declared by the commissioner of public health.

Instructions for requesting the official exemption affidavit that must be signed by parents/guardians choosing the exemption for reasons of conscience, including a religious belief, can be found at www.ImmunizeTexas.com. Original Exemption Affidavit must be completed and submitted to the school or child-care facility.

For children claiming medical exemptions, a written statement by the physician must be submitted to the school or child-care facility.

Provisional Enrollment

All immunizations should be completed by the first date of attendance. The law requires that students be fully vaccinated against the specified diseases. A student may be enrolled provisionally if the student has an immunization record that indicates the student has received at least one dose of each specified age-appropriate vaccine required by this rule. To remain enrolled, the student must complete the required subsequent doses in each vaccine series on schedule and as rapidly as is medically feasible and provide acceptable evidence of vaccination to the school. A school nurse or school administrator shall review the immunization status of a provisionally enrolled student every 30 days to ensure continued compliance in completing the required doses of vaccination. If, at the end of the 30-day period, a student has not received a subsequent dose of vaccine, the student is not in compliance and the school shall exclude the student from school attendance until the required dose is administered.

Documentation

Since many types of personal immunization records are in use, any document will be acceptable provided a physician or public health personnel has validated it. The month, day, and year that the vaccination was received must be recorded on all school immunization records created or updated after September 1, 1991.



Texas Department of State Health Services • Immunization Branch • MC-1946 • P. O. Box 149347 • Austin, TX 78714-9347 • (800) 252-9152



Requisitos de vacunación mínimos estatales de Texas de 2013-2014 para estudiantes de kínder-12.º grado

Este gráfico resume los requisitos de vacunación incorporados en el Código Administrativo de Texas (o TAC), título 25, Servicios de salud, Secciones 97.61 a 97.72. El gráfico no tiene como propósito sustituir las consultas al TAC, el cual contempla otras disposiciones y detalles. [Haga clic aquí para obtener el texto completo del TAC.](#)

El Código Educativo de Texas, capítulo 38, Salud y Seguridad, subcapítulo A, Disposiciones Generales, concede la autoridad de establecer requisitos de inmunización al Departamento Estatal de Servicios de Salud de Texas (o DSHS).

REQUISITOS DE INMUNIZACIÓN

Los estudiantes deberán mostrar comprobantes de vacunación aceptables antes de entrar, asistir o ser transferidos a una guardería o escuela primaria o secundaria pública o privada de Texas.

Vacuna requerida (Vea las notas y las notas de pie de página)	Número mínimo de dosis requeridas por nivel de grado					NOTAS
	Kínder - 4.º	5.º - 6.º	7.º	8.º - 11.º	12.º	
Difteria, tétanos y pertusis (DTaP, DTP, DT, Td, Tdap) ¹	5 dosis o 4 dosis	5 dosis o 4 dosis	Serie primaria de 3 dosis y 1 dosis de refuerzo de la vacuna Tdap o Td en los últimos 5 años	Serie primaria de 3 dosis y 1 dosis de refuerzo de la vacuna Tdap o Td en los últimos 10 años		Cinco (5) dosis de la vacuna contra la difteria, el tétanos y la pertusis; debe haberse recibido una dosis en o después del 4.º cumpleaños. Sin embargo, con cuatro dosis se cumple con el requisito si la 4.ª dosis se recibió en o después del 4.º cumpleaños. Los estudiantes de 7 años de edad o más, con tres dosis cumplen con el requisito si recibieron una dosis en o después del 4.º cumpleaños. Para el 7.º grado: se requiere 1 dosis de la vacuna Tdap si han pasado al menos 5 años desde la última dosis de una vacuna que contenga tétanos. Para los grados de 8.º-12.º: se requiere una dosis de la vacuna Tdap si han pasado 10 años desde la última dosis de una vacuna que contenga tétanos. La vacuna Td es aceptable en lugar de la vacuna Tdap si existe una contraindicación médica con respecto a la vacuna contra la pertusis.
Polio ¹	4 dosis o 3 dosis	4 dosis o 3 dosis	4 dosis o 3 dosis	4 dosis o 3 dosis	4 dosis o 3 dosis	Cuatro (4) dosis de la vacuna contra la polio; debe recibirse una dosis en o después del 4.º cumpleaños. Sin embargo, con tres dosis se cumple con el requisito si la 3.ª dosis se recibió en o después del 4.º cumpleaños.
Sarampión, paperas y rubéola ^{1,2} (MMR)	2 dosis	2 dosis	2 dosis		2 dosis	La 1.ª dosis de la vacuna MMR debe recibirse en o después del 1.º cumpleaños. Para el kínder-4.º grado, se requieren dos dosis de la vacuna MMR. Para los grados de 5.º-12.º, se requieren dos dosis de una vacuna que contenga sarampión, una dosis de la vacuna contra la rubéola y una dosis de la vacuna contra las paperas.
Hepatitis B ²	3 dosis	3 dosis	3 dosis	3 dosis	3 dosis	Los estudiantes de 11-15 años de edad, con dos dosis cumplen con el requisito si recibieron la vacuna contra la hepatitis B para adultos (Recombivax). Deben documentarse claramente la dosis y el tipo de vacuna. Dos (2) dosis de 10 mcg/1.0 mL de Recombivax.
Varicela ^{1,2,3}	2 dosis	1 dosis	2 dosis		1 dosis	La 1.ª dosis de la vacuna contra la varicela debe recibirse en o después del 1.º cumpleaños. Para el kínder-4.º y 7.º-11.º grado, se requieren dos dosis. Se requiere una (1) dosis para todos los demás niveles de grado. Se requieren dos dosis para todos los estudiantes que reciban la 1.ª dosis en o después de los 13 años de edad.
Meningocócica					1 dosis	
Hepatitis A ^{1,2}	2 dosis					La 1.ª dosis de la vacuna contra la hepatitis A debe recibirse en o después del 1.º cumpleaños.

¹ Recibir la dosis hasta (e inclusive) 4 días antes del cumpleaños satisfará el requisito de inmunización para entrar a la escuela.

² La confirmación serológica de la inmunidad al sarampión, las paperas, la rubéola, la hepatitis B, la hepatitis A o la varicela o la evidencia serológica de infección son aceptables en lugar de la vacuna.

³ La enfermedad previa puede documentarse con una declaración escrita de un médico, una enfermera escolar o el padre o tutor del niño que diga algo como: "Esto es para verificar que (nombre del estudiante) tuvo varicela el (fecha) o por esa fecha y no necesita la vacuna contra la varicela". Dicha declaración escrita será aceptable en lugar de todas las dosis requeridas de la vacuna contra la varicela.

Exenciones

La ley permite que (a) los médicos redacten una declaración en la que expongan que la vacuna o vacunas requeridas serían médicamente dañinas o perjudiciales para la salud y el bienestar del niño o de una persona que vive en la casa y que (b) los padres o tutores elijan una exención de los requisitos de inmunización por razones de conciencia, incluso creencias religiosas. La ley no permite que los padres o tutores elijan una exención simplemente por inconveniencia (por ejemplo, si se pierde un registro o éste está incompleto y sería mucha molestia ir con un médico o clínica para corregir el problema). Las escuelas y las guarderías deben mantener una lista actualizada de los estudiantes con exenciones, de forma que se les pueda excluir durante emergencias o epidemias declaradas por el director de salud pública.

Encontrará instrucciones para solicitar la declaración jurada de exención oficial que debe ser firmada por los padres o tutores que elijan la exención por razones de conciencia, incluso creencias religiosas, en www.ImmunizeTexas.com. La declaración jurada de exención original debe rellenarse y presentarse a la escuela o guardería.

En el caso de los niños que soliciten exenciones médicas, deben presentar una declaración escrita del médico a la escuela o guardería.

Inscripción provisional

Todas las inmunizaciones se deben finalizar antes de la primera fecha de asistencia. La ley exige que los estudiantes estén completamente vacunados contra las enfermedades señaladas. Un estudiante se puede inscribir provisionalmente si el estudiante cuenta con registro de inmunización que indique que el estudiante ha recibido al menos una dosis de cada vacuna apropiada para la edad específica que esta regla exija. Para seguir inscrito, el estudiante debe completar las dosis posteriores requeridas de cada serie de vacunas conforme al calendario y tan rápidamente como sea médicamente posible y proveer comprobante suficiente de la vacunación a la escuela. Una enfermera escolar o un administrador escolar revisará el estado de inmunización de un estudiante inscrito provisionalmente cada 30 días para garantizar el cumplimiento ininterrumpido en la finalización de las dosis de vacunas requeridas. Si, al final del periodo de 30 días, un estudiante no ha recibido una dosis posterior de la vacuna, el estudiante no está cumpliendo y la escuela excluirá al estudiante para que no asista a la escuela hasta que se administre la dosis requerida.

Documentación

Dado que se usan muchos tipos de registros de inmunización personales, cualquier documento es aceptable si un médico o el personal de salud pública lo ha validado. Debe registrarse el mes, día y año en que se recibió la vacuna en todos los registros de inmunización escolares creados o actualizados después del 1 de septiembre de 1991.





University of Texas-University Charter School
P.O. Box 7667 Austin, Texas 78713-7667 (512)232-6403 phone (512)232-9177 fax
Student Residency Questionnaire

Name of School _____ School Year _____

Name of Student _____
Last First Middle

This questionnaire is intended to address the McKinney-Vento Act 43 U.S.C. 11435 (MV ACT). The answers to this residency information help determine the services the student may be eligible to receive.

- 1. Is your current address a temporary living arrangement? (You are not living in your own home or renting an apartment) YES _____ NO _____
2. Is this temporary living arrangement due to loss of housing or economic hardship? YES _____ NO _____
3. Were you displaced from your home due to a Natural Disaster (hurricane, tornado, etc?) YES _____ NO _____

If you answered YES to question 1, 2, and 3 complete sections A & B.
If you answered YES to questions 1 and 2 only complete section B.
If you answered NO to all questions you may stop here.

Section A

Type of Natural Disaster:

- [] Hurricane _____ (Please name)
[] Other _____ (Please describe)

Section B

Where is the student presently living? (Check all that apply)

- [] In a shelter (emergency, family, domestic violence, etc.)
[] Doubled-up (living with friend/relatives)
[] Unsheltered (cars, campgrounds, etc.)
[] Hotels/Motels
[] Unknown

Previous Address: _____
Street Address City State Zip

Last School Attended: _____
Full School Name City State Zip

Name of Parent(s)/Legal Guardian(s) _____

Presenting a false record or falsifying records is an offense under Section 37.10, Penal Code and enrollment of a child under false documents subjects the person to liability for tuition or others costs. TEC Sec.25.001(h) Education.

Signature of Parent/Legal Guardian: _____
Date: _____

Campus: _____



The University of Texas University Charter School

STUDENT MILITARY AND FOSTER CARE QUESTIONNAIRE

Due to recent House Bill 525 and Senate Bill 833, it has become necessary for the University of Texas University Charter School to collect the status of students in regards to military and foster care. This information must be reported to the Texas Education Agency in our District PEIMS submissions.

Please mark one box in each section and return this form to your campus as soon as possible.

Military – Is your student a dependent of an active military member?
Please check one box below.

- 0 - My Student **is not** a military connected student
- 1 - US Military - Army, Navy, Air Force, Marine Corps or Coast Guard on active duty
- 2 - Texas National Guard on active duty
- 3 - Reserve Force of the US Military on active duty

Foster Care – Is your student receiving Foster Care Services?
Please check one below.

- 0 - My student **does not** receive Foster Care Services.
- 1 – Student is currently receiving Foster Care Services. **If applies, please provide a copy of the Texas DFPS Placement Authorization Form (Form 2085) or a court order that designates the student is in the conservatorship of the Department of Family and Perfective Services.**

Student Name (Please Print)

Grade Level

Parent Signature

Date









2013-2014 Family Survey



District:	Campus:	
Student Name:	Date of Birth:	Grade Level:

Dear Parents,
 In order to better serve your children, our school district is helping the State of Texas identify students who may qualify to receive additional educational services.
The information provided below will be kept confidential. Please answer the following questions and return this form to your child's school.

1. Within the past 3 years have you, or your child, moved from one school district, city or state to another? YES or NO
 2. If yes, did you, or your child, move so you could work or look for work in agriculture or fishing?
- NO (STOP here and return survey to your child's school.) YES (Please check all that apply below)

 Fruit, vegetables, sunflower, cotton, wheat, grain, on farms or ranches, fields & vineyards <input type="checkbox"/>	 Working in a cannery <input type="checkbox"/>	 Working on a dairy farm or ranch. <input type="checkbox"/>	 Working in a fishery <input type="checkbox"/>
 Working on a poultry farm <input type="checkbox"/>	 Working in a plant nursery, orchard, tree growing or harvesting <input type="checkbox"/>	 Working in a slaughterhouse <input type="checkbox"/>	 Other similar work, please explain: _____ _____

Please complete the following information: (Please print)		Best time to contact you: _____	
Parent/Guardian Name:	Home Address/Apt Name:	City:	Zip Code:
Telephone Number:	Mailing Address:	City:	Zip Code:

For School Use Only: Please email survey with two YES responses to veronica.esparza@esc20.net

2013-2014 Encuesta de familia



Distrito:	Escuela:	
Nombre del estudiante:	Fecha de Nacimiento :	Grado:

Estimados padres,
 Para mejorar los servicios de sus hijos, el distrito está colaborando con el estado de Texas para identificar a los estudiantes que pueden calificar para recibir servicios educativos adicionales.
 Toda la información proporcionada será mantenida confidencial. Favor de responder a las siguientes preguntas y regresar esta forma a la escuela de su hijo/hija

1. ¿Dentro de los últimos 3 años usted, o su hijo/hija, se ha mudado de distrito escolar, ciudad o estado? **SI** o **NO**

2. ¿Si respondió **SI**, usted, o su hijo/a, se mudó para trabajar o buscar trabajo de agricultura o de pesca?

NO (ALTO Regrese la encuesta a la escuela de su hijo/a.) **SI** (FAVOR elija los que apliquen abajo)

 Fruta, verduras, soya, girasol, algodón, trigo, betabel, la granja o ranchos, campos y viñedos <input type="checkbox"/>	 Trabajando enlatando frutas o verduras <input type="checkbox"/>	 Trabajando en una lechería o rancho <input type="checkbox"/>	 Trabajando en la pesca <input type="checkbox"/>
 Trabajando en granjas de aves <input type="checkbox"/>	 Trabajando en un vivero de plantas, plantando o cosechando arboles <input type="checkbox"/>	 Trabajando en una casa de matanza <input type="checkbox"/>	 Otro trabajo similar, favor de explicar: _____ _____

Favor de llenar lo siguiente: (Favor de usar letra de molde)		Mejor hora para comunicarse con usted? : _____	
Padre/Guardian:	Dirección de domicilio/ Apartamentos:	Ciudad:	Código Postal:
Numero de Telefono:	Dirección Postal:	Ciudad:	Código Postal:

For School Use Only: Please email survey with two YES responses to veronica.esparza@esc20.net

2013-2014 Letter to Households to Qualify The University of Texas-University Charter School for Compensatory Education Funding for School Year 2014-2015

Dear Parent or Guardian:

The University of Texas-University Charter School may qualify for additional funding from the state if any of our students meet certain guidelines. The additional funding, known as the Compensatory Education Allotment, is used to provide supplemental services to students who are at-risk or not performing at an appropriate level. Please help us collect the necessary information so that we may receive additional state dollars for the benefit of our students.

The district is automatically eligible for this funding if you receive food stamps or Temporary Assistance for Needy Families (TANF). Otherwise, the district may qualify for this funding depending upon your income and family size. Please complete the attached *Form for Compensatory Education Funding Qualification* and return it to:

UT-UCS Registrar
Fax: 512-232-9177

Please complete a separate form for each child. Attached are more detailed instructions to help you fill out the form.

- Households receiving food stamps or Temporary Assistance for Needy Families (TANF): Complete the child's name and case number and have an adult household member sign the form. If you have more than one child attending school, complete a separate form for each child.
- Households with one or more foster child. List the child's name and the amount of "personal use" income the child received last month and have an adult household member sign the form. If you have more than one foster child attending school, complete a separate form for each one.
- Households that do not receive food stamps or TANF: If you do not have a case number, you should list the names of all household members, the amount of income each person received last month, and where the income came from. An adult household member must sign the form and include his or her social security number or indicate that he or she has no social security number. If you have more than one child attending school, you should complete a separate form for each one, but you only have to complete this section once.

Frequently Asked Questions:

Will the form be verified? Yes. State officials require us to verify the information that qualifies the district for the extra funding, therefore, the information that you send us may be checked at any time during the school year. School officials may ask you to send written documentation to verify that your income meets the eligibility guidelines.

Should I report any changes? Yes. If your income meets eligibility guidelines, please tell us if your income increases by more than \$50 per month or \$600 per year, or if the size of your household decreases. If your household receives food stamps or TANF, you should tell us when you no longer receive these benefits.

Will this information be kept confidential? Yes. We will use the information on your form only to see if your child or children meet the eligibility guidelines that will enable the district to receive the extra funding. The information will not be used for any other purpose.

Will my child receive extra services if I complete this form? Not necessarily. Funding for this program is based on the number of students with certain qualifying levels of family income, but the allocated funds must be spent for students that meet different eligibility criteria. If your child has performed poorly on TAKS or other required tests, or meets other criteria for being at-risk of dropping out of school, then your child will likely receive additional services. If your child does not directly benefit-- other children in the district may benefit from this additional funding.

If my family income does not qualify the district for extra funding now, can I apply later if my circumstances change? Yes. You may submit the required forms at any time. If your income does not meet eligibility guidelines now but circumstances change (like household income decreases, household size increases, a wage earner become unemployed, the household receives food stamps or TANF), complete the form again. If you need new forms or any other help or information, call the UT-UCS Registrar at 512-232-6403.

Why does the consent in paragraph 6 refer to free or reduced price meals or free milk when my school does not participate in that program? State compensatory education funds are partially allotted on the basis of the number of students in a school district or charter school who are eligible for the national free or reduced-price lunch program in which some schools participate. Therefore, in order for your school to receive the amount of state compensatory education funds to which it is entitled, you are being asked to provide the same information that would be provided in an application to participate in that program. The consent paragraph is included on the form because federal law does not allow the disclosure of information about children eligible for free or reduced price meals or free milk without consent and further requires that the consent include a statement that the failure to sign does not make the child ineligible for the meal/milk program.

Thank you for your help.

Sincerely,

Gwyn Boyter, Ph.D.
Superintendent
University of Texas-University Charter School

Instructions for Completing the Compensatory Education Funding Qualification Form

Please complete the **Compensatory Education Funding Qualification Form** using the instructions below. Sign, date and return the form to **UT-UCS Registrar:512-232-9177 (fax)**. If you need assistance, call the Registrar's office. Complete a separate form for each child in your household that attends public school.

1. Child information. Print your child's name, grade, and the name of the school.

2. Foster child. Complete this section if this is a foster child. List the foster child's monthly "personal use" income. Put "0" if the foster child does not receive "personal use" income. A foster parent or other official representing the child must sign the form in section #5. You are not required to list a social security number.

3. Food stamps or Temporary Assistance for Needy Families (TANF) benefits. If you are receiving food stamps or TANF benefits for the child, complete this section of the form. List the current food stamp or TANF case number for the child. An adult household member must sign the form in section #5. You are not required to list a social security number.

4. All other households. Complete this section of the form if the child is not a foster child and you are not receiving food stamps or TANF benefits for the child. (If you have more than one child attending public school and you are filling out a separate form for each one, you only need to complete this section once.)

List the name of everyone in your household even if they do not have an income. Include yourself, your spouse, the child, and all other household members.

List the amount of income each person received last month before taxes or any other payroll deductions. List the income source, such as earnings, welfare, pensions, and other income. (See examples below for types of income to report.) Each income amount should be entered in the appropriate column on the form. If any amount last month was more or less than usual, write that person's usual monthly income.

If anyone is self-employed, write the amount of income the person earns from self-employment. For example, self-employment income could be from operating a farm or a business such as a day care center.

Sign the form in section #5 and list your social security number. If you do not have a social security number, write "none."

5. Signature and social security number. The form must have the signature of an adult household member. Unless you have a food stamp or TANF case number or the child is a foster child, the social security number of the adult who signs the form must be included. If the person who signs the form does not have a social security number, put "none."

6. Consent. The adult household member whose signature appears in 5 should sign and date the consent.

Examples of Income to Report

Earnings from work

Wages/salaries/tips
 Strike benefits
 Unemployment compensation
 Worker's compensation
 Net income from self-owned business such as day care center, farm or other

Welfare/Child Support/Alimony

Public assistance payments
 Welfare payments
 Alimony/child support payments

Pensions/Retirement/Social Security

Pensions
 Supplemental security income
 Retirement income
 Veteran's payments
 Social security

Other Monthly Income/Self-Employment

Disability benefits
 Cash withdrawn from savings
 Interest/dividends
 Income from estates/trusts/investments
 Regular contributions from persons not living in the household
 Net royalties/annuities/net rental income
 Military allowance for off-base housing
 Any other income

The University of Texas - University Charter School

Student and Parent Agreement for Acceptable Use of the District's Electronic Communications System

(Please reference the Acceptable Use Guidelines and Acceptable Use Policy)

2013-2014 School Year

Parent:

I have read the Acceptable Use Guidelines (AUG) and Acceptable Use Policy (AUP) regarding the District's Electronic Communications System. In consideration for the privilege of my child using the District's Electronic Communications System, and in consideration for having access to the public networks, I hereby release the District, its operators, and any institutions with which they are affiliated from any and all claims and damages of any nature arising from my child's use of, or inability to use the system, including, without limitation, the type of damage identified in the District's policies and administrative regulation.

I give permission for my child to participate in the District's Electronic Communications System, utilizing District-provided equipment and resources, and certify that the information contained on this form is correct.

If permission is given, the student must complete the following Student section.

I do not give permission for my child to participate in the District's Electronic Communications System.

If permission is not given, your child will not be able to use networked District computers, online services and resources, or other computer-related equipment at school.

Student:

I understand that my computer use is not private and that the District will monitor my activity on any computer system while at school.

I have read the Acceptable Use Guidelines (AUG) and Acceptable Use Policy (AUP) regarding the District's Electronic Communications System and agree to abide by their provisions. I understand that violation of these provisions may result in suspension or revocation of system access and/or other appropriate disciplinary or legal action in accordance with the Student Code of Conduct and applicable laws.

Student's Name (Please Print)

UT-UCS Campus

Student's Signature Date

Parent/Guardian Signature Date



University of Texas-University Charter School-Ethnicity Questionnaire

P.O. Box 7667 | Austin, Texas 78713-7667 | (512)232-6403 phone | (512)232-9177 fax

**Texas Education Agency
Texas Public School Student/Staff Ethnicity and Race Data Questionnaire**

The United States Department of Education (USDE) requires all state and local education institutions to collect data on ethnicity and race for students and staff. This information is used for state and federal accountability reporting as well as for reporting to the Office of Civil Rights (OCR) and the Equal Employment Opportunity Commission (EEOC).

School district staff and parents or guardians of students enrolling in school are requested to provide this information. If you decline to provide this information, please be aware that the USDE requires school districts to use observer identification as a last resort for collecting the data for federal reporting.

Please answer both parts of the following questions on the student's or staff member's ethnicity and race. *United States Federal Register (71 FR 44866)*

Part 1. Ethnicity: Is the person Hispanic/Latino? (Choose only one)

- Hispanic/Latino** - A person of Cuban, Mexican, Puerto Rican, South or Central American, or other Spanish culture or origin, regardless of race.
- Not Hispanic/Latino**

Part 2. Race: What is the person's race? (Choose one or more)

- American Indian or Alaska Native** - A person having origins in any of the original peoples of North and South America (including Central America), and who maintains a tribal affiliation or community attachment.
- Asian** - A person having origins in any of the original peoples of the Far East, Southeast Asia, or the Indian subcontinent including, for example, Cambodia, China, India, Japan, Korea, Malaysia, Pakistan, the Philippine Islands, Thailand, and Vietnam.
- Black or African American** - A person having origins in any of the black racial groups of Africa.
- Native Hawaiian or Other Pacific Islander** - A person having origins in any of the original peoples of Hawaii, Guam, Samoa, or other Pacific Islands.
- White** - A person having origins in any of the original peoples of Europe, the Middle East, or North Africa.

Student/Staff Name (please print)

(Parent/Guardian)/(Staff) Signature

Student/Staff Identification Number

Date

Texas Education Agency – March 2009



University of Texas-University Charter School
P.O. Box 7667 Austin, Texas 78713-7667 (512)232-6403 phone

Residential Facility Questionnaire

Per reporting requirements for the Texas Education Agency, the following information must be provided for each student who enrolls in the University of Texas-University Charter School campus on your facility. Please forward the completed form to the campus administrator.

Student Name: _____ **DOB:** _____

1. Is your facility a residential treatment facility?

Yes No

2. Was this student court-ordered into the facility?

Yes (Attribution code 21) No (Attribution code 23)

3. Is this student a foster child?

Yes No

a. If Yes:

Texas Department of Protective Services
 Out of State

4. Is this child under the conservatorship of the Texas Department of Protective Services?

Yes No

Signature of Facility Official

Date

Printed Name