

# THE LITTLEFIELD BRONZE DOORS

by

David B. Gracy II

Governor Bill Daniel Professor in Archival Enterprise

School of Information

The University of Texas at Austin

Great, Great Nephew of George Washington Littlefield



The Bronze Doors



## Bronze Doors In Situ, 1912



BRONZE DOORS TO MAIN ENTRANCE

## The Sculptor--H. Daniel Webster





GEORGE W. LITTLEFIELD

---

## Early Life Panola County, Mississippi



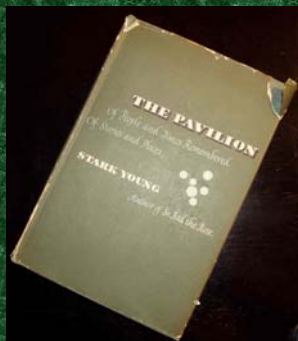
7

## Mildred Terrell Satterwhite White Littlefield



8

## Fleming Littlefield



9

## Gonzales County, 1850s



10

## Gonzales College



11

## 8th Texas Cavalry



12

## Into the Cattle Business, 1871



13

## LIT Ranch, 1877-1881



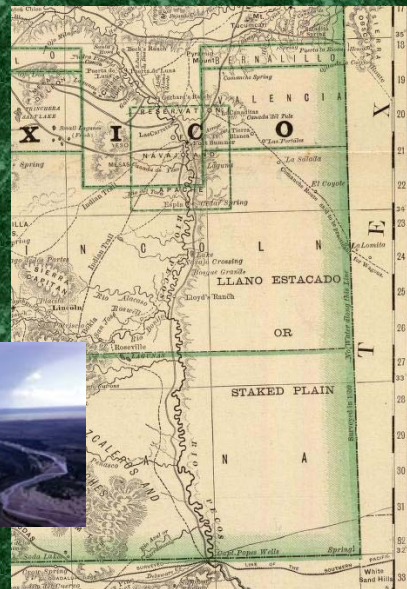
14

LIT Ranch, 1877-1881



15

Bosque Grande Ranch,  
1882-1890s



16



## LFD Brand



17

## 4 Lakes Ranch, 1883-1915



18

Partners—Tom and Phelps White



19

Range Boss—Bud Wilkinson



20

## Gonzales, Austin, and Cattle, 1870-1880s



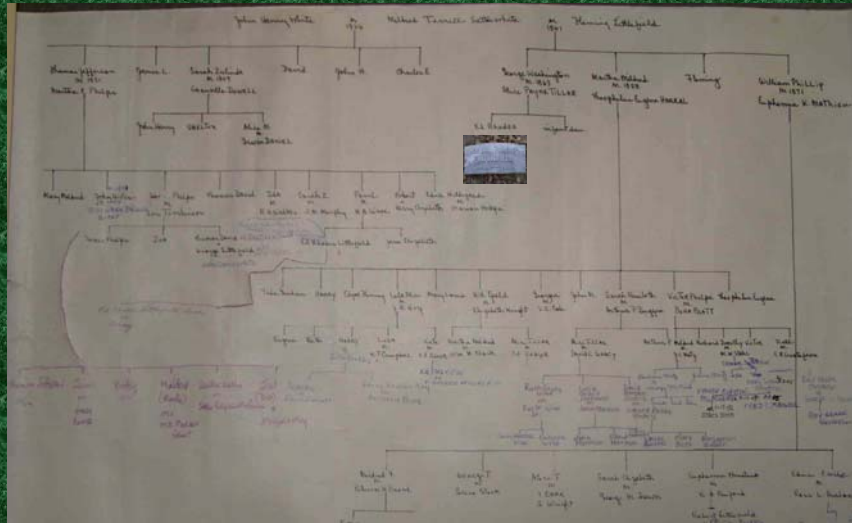
21

## The Home New, 1894



22

## The Littlefield Extended Family



## A Lively Place for Family and Friends



## American National Bank, 1890-1911



25

Littlefield Building, Austin, Texas.



“The Most Modern Building in the South” and Austin’s Tallest, 1911-



26

## Bank Presidents George Littlefield & Gus Wroe



## GEORGE LITTLEFIELD'S CATTLE ART



## Alice Littlefield's Painting



29

## The Bulls Sculpture



30

## The Murals

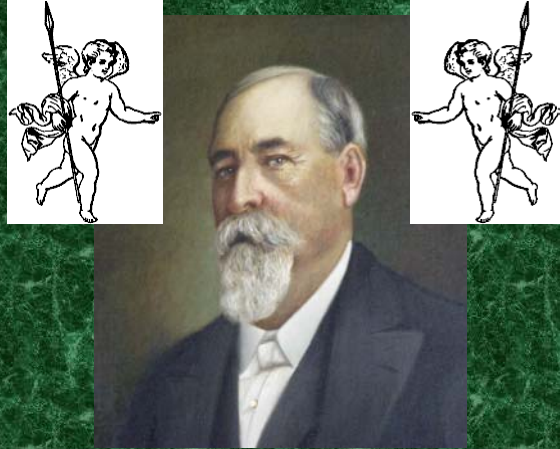


## Location of the Grand Entrance Doors



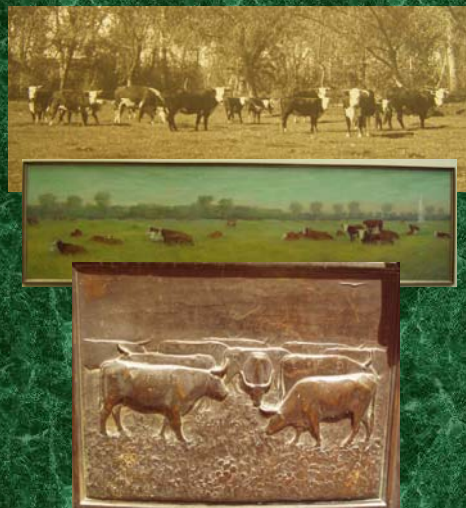


Concept of Centerpiece of Coppini Design



33

Bottom Panels  
LFD Farm, Roswell,



34

Bottom Panels  
LFD Farm, Roswell, or 4 Lakes Ranch, New Mexico



35

Branded



36

Left Top Panel  
Bosque Grande Headquarters?



37

Left Top Panel  
Bosque Grande Headquarters?



38

Left Top Panel  
Bosque Grande Headquarters?



39

Right Top Panel  
Yellow House Ranch



CASAS AMARILLAS  
(YELLOW HOUSES)

MOST FAMOUS LANDMARK ON THE SOUTH PLAINS • ANCIENT INDIAN CAMP GROUND • VISITED IN THE 17TH CENTURY BY SPANISH MISSIONARIES • HERE THE WHITES RECOVERED THROUGH TRADE PROPERTY STOLEN BY INDIANS • CAMP SITE FOR BUFFALO HUNTERS, FREIGHTERS AND CATTLEMEN • ACQUIRED BY THE X.Y.T. SYNDICATE, 1882; BY GEORGE W. LITTLEFIELD, 1901.



40

Right Top Panel  
Yellow House Ranch



41

Middle Panels



42

Middle Panels  
Mescalero Spring, New Mexico



43

Middle  
Panels  
Mescalero  
Spring,  
New Mexico

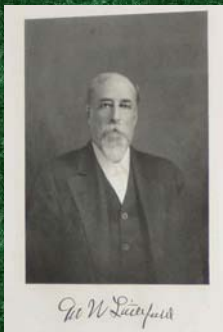


Middle Panels  
Bud Wilkinson and Hamlin Hill



45

UNIVERSITY OF TEXAS



Appointed to the Board of Regents, 1911  
by Governor Oscar B. Colquitt

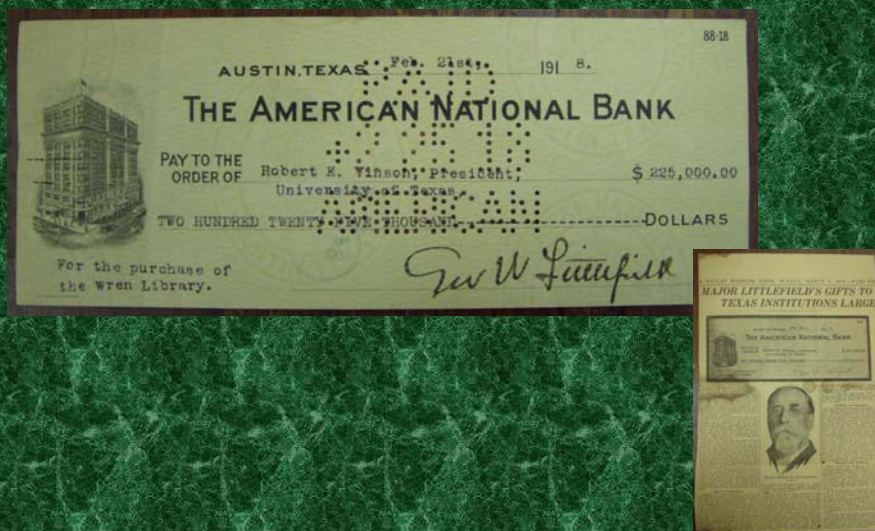


## The Littlefield Fund for Southern History, 1914



47

## The Wrenn Library, 1918





## Littlefield Dormitory



49

## Littlefield Home



50

## Littlefield Fountain



51

## The Ferguson Controversy, 1917



52

## The Ferguson Controversy, 1917



53

## The Ferguson Controversy, 1917



54

## The Ferguson Controversy, 1917



55

## The Ferguson Controversy, 1917



56

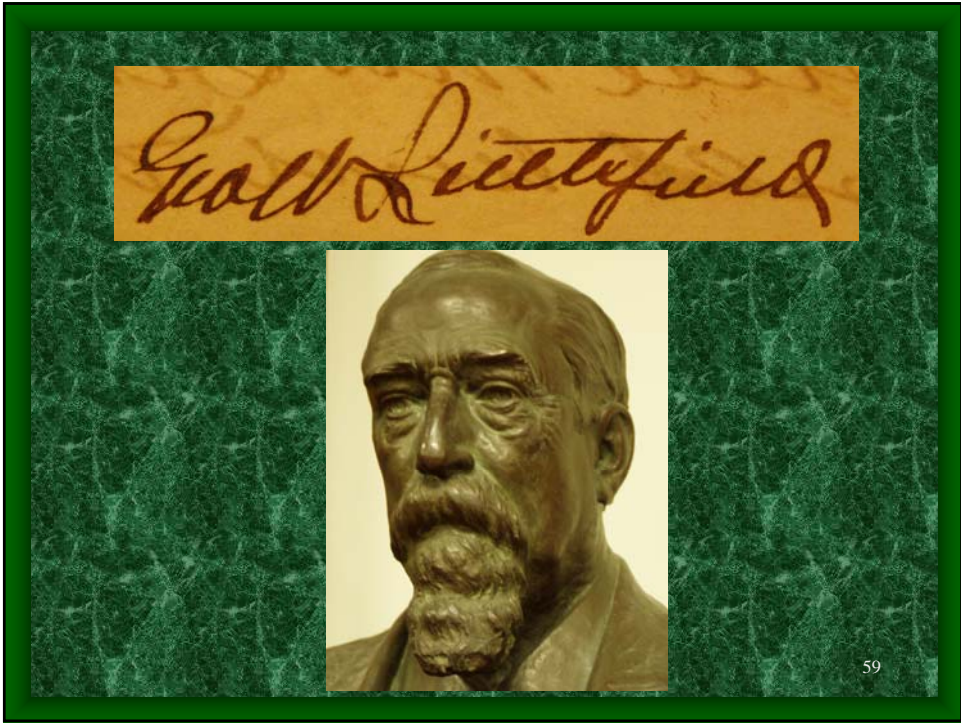
Died November 10, 1920



57

*Geoff Littlefield*





Gault Littlefield

